

EMERGENCY ACTION PLAN

FOR

Upper North River Dam #77

#015007

Hearthstone Dam

Lat 38°23'40.6"N

Long 79°09'43.9"W

**COVERING THE TIME PERIOD DURING DAM
REHABILITATION CONSTRUCTION**

This Emergency Action Plan was submitted (mailed, delivered, hand carried) by the dam owner to the **Augusta County, Donna Good, Emergency Services Coordinator, Rockingham County, Jeremy Holloway, Harrisonburg/Rockingham Emergency Operation Center, and Town of Bridgewater, Betsy Putney** and a copy of the Dam Break Inundation Study was submitted to the Department of Planning & Zoning.

Initialed by EAPC & Dated

EMERGENCY ACTION PLAN

TABLE OF CONTENTS

	Page
Cover Sheet with Delivery Certification	1
Table of Contents	2
I. Basic Information & Emergency Action Plan Overview	3-4
II. Notification Flow Charts & Contact information for Homeowners & Business at Risk and Unoccupied Buildings & Land in the Inundation Area	5-8
III. Statement of Purpose	9
IV. Project Description	9
V. Emergency Detection, Evaluation, and Classification	9-11
A. The depth of flow in emergency spillway for Stage II & III conditions	
B. Amount of rainfall that will initiate Stage II & III conditions	
C. Frequency of observations by rainfall/staff gauge observer	
D. Public Roads Downstream from this Dam:	
E. Table 2: Guidance, Determining proper emergency stage for various situations	
VI. General Responsibilities Under the EAP	12-14
A. Impounding Structures Owner's Responsibility	
B. Responsibility for Notification	
C. Responsibility for Evacuation	
D. Responsibility for Termination and Follow-up	
E. EAP Coordinator Responsibility	
F. Methods for notification and warning	
G. Evacuation Procedures	
VII. Preparedness	15-16
VIII. Inundation Maps	17-18
IX. Coordination Between Owner/Local Government	19
X. Appendices	
A. Investigation and Analysis of Impounding Structure Failure Floods	20
B. Plans for Training, Exercising, Updating, and Posting the EAP	21
C. Site-Specific Concerns	22
D. Additional Resources	23-26
E. Evacuation List	27- 30

**EMERGENCY ACTION PLAN FOR HIGH AND SIGNIFICANT HAZARD
IMPOUNDING STRUCTURES**

Reference: Impounding Structure Regulations, Chapters 2 and 3, Virginia Soil and Water Conservation Board

I. BASIC INFORMATION

- A. Name of Impounding Structure: Upper North River Dam #77
Inventory Number: 015007 Other Name (if any): Hearthstone
IFLOWS Gages: Rain (Located on top of Dam): # 1246 Stage: #1247
http://72.66.190.197/Virginia_IFLOWS/index.php
- B. Hazard Potential Classification from Table I, Virginia Dam Safety Regulations:
- Low Significant High (Circle One)
- C. Name of Owner: Headwaters Soil & Water Conservation District
Address: 70 Dick Huff Ln, Verona, VA 24482
Telephone: (Business)(540) 248-0148,
Alternative Contact Information: Charles Horn, (540) 350-2351
Alternative Contact Information: Rick Shiflet, Chairman, (540) 337-6940
Alternative Contact Information: John Kaylor, (W) (540) 248-0148, (H) 540-249-5671
Cell: (540) 470-4928
- D. Name of Dam Operator: Headwaters SWCD
Address: 70 Dick Huff Ln, Verona, VA 24482
Telephone: (Business)(540) 248-0148,
Land Owner: United States Forest Service; Mary Yonce, Ranger (540)-984-4101
Address: Oak Wood Drive, Harrisonburg, VA 22801
- Name of Alternate Operator: United States Forest Service; Mary Yonce, Ranger
Telephone: (Business)(540) 984-4101
Alternative Contact Information: _____
- Name of Alternate Operator: Michael Jimenez
Telephone: (Business)(540) 248-0148 (Cell)(540) 430-2511
Alternative Contact Information: Mjimenez@co.augusta.va.us
- E. Name of Rain or Staff Gauge Observer: United States Forest Service; Assigned Staff
Address: Oak Wood Drive, Harrisonburg, VA 22801
Telephone: (Business) (540) 984-4101 (Residential) () _____
- Name of Alternate Observer: Michael Jimenez
Telephone: (Business)(540) 248-0148 (Cell)(540) 430-2511
- F. 24-Hour Dispatch Center Nearest Dam:
Augusta County Government Center, Emergency Operations Center
Address: P.O. Box 590, Verona, VA 24482-0590
Telephone: (Business)(540) 245-5501 or 911
- G. Name of County Emergency Services Manager: Donna Good
Address: 18 Government Center Lane, Verona, VA 24482
Telephone: (Business)(540) 245-5503 (Cellular)(540) 487-9545

EMERGENCY ACTION PLAN OVERVIEW

The following flow chart shall be used to access emergency conditions and determine the emergency stage that will direct subsequent notification and response actions

Step 1: Emergency Condition Detection	Event Detection See § V.		
Step 2: Emergency Level	Assess Situation: Determine Emergency Level See § V.		
	Emergency Stage 1 Non-Emergency Incident; Slowly developing situation See Definition Below	Emergency Stage 2 Potential dam failure situation; Rapidly developing situation See Definition Below	Emergency Stage 3 Urgent; Dam failure is imminent or in progress See Definition Below
Step 3: Notification & Communication	Stage 1 Notification List See § 2.1.1	Stage 2 Notification List See § 2.1.2	Stage 3 Notification List See § 2.1.3
Step 4: Expected Action	Inspect Dam: Increased Monitoring	Save Dam: Expected Actions	Save Lives: Evacuation
Step 5: Termination and Follow Up	Termination and Follow Up		

Surveillance and instrumentation readings at the site will be the normal methods of detecting potential emergency situations. For conditions beyond the normal range of operations contact the Dam Owner (Section I) for assistance with evaluation of the conditions. Each event or situation will be placed in one of the following classifications:

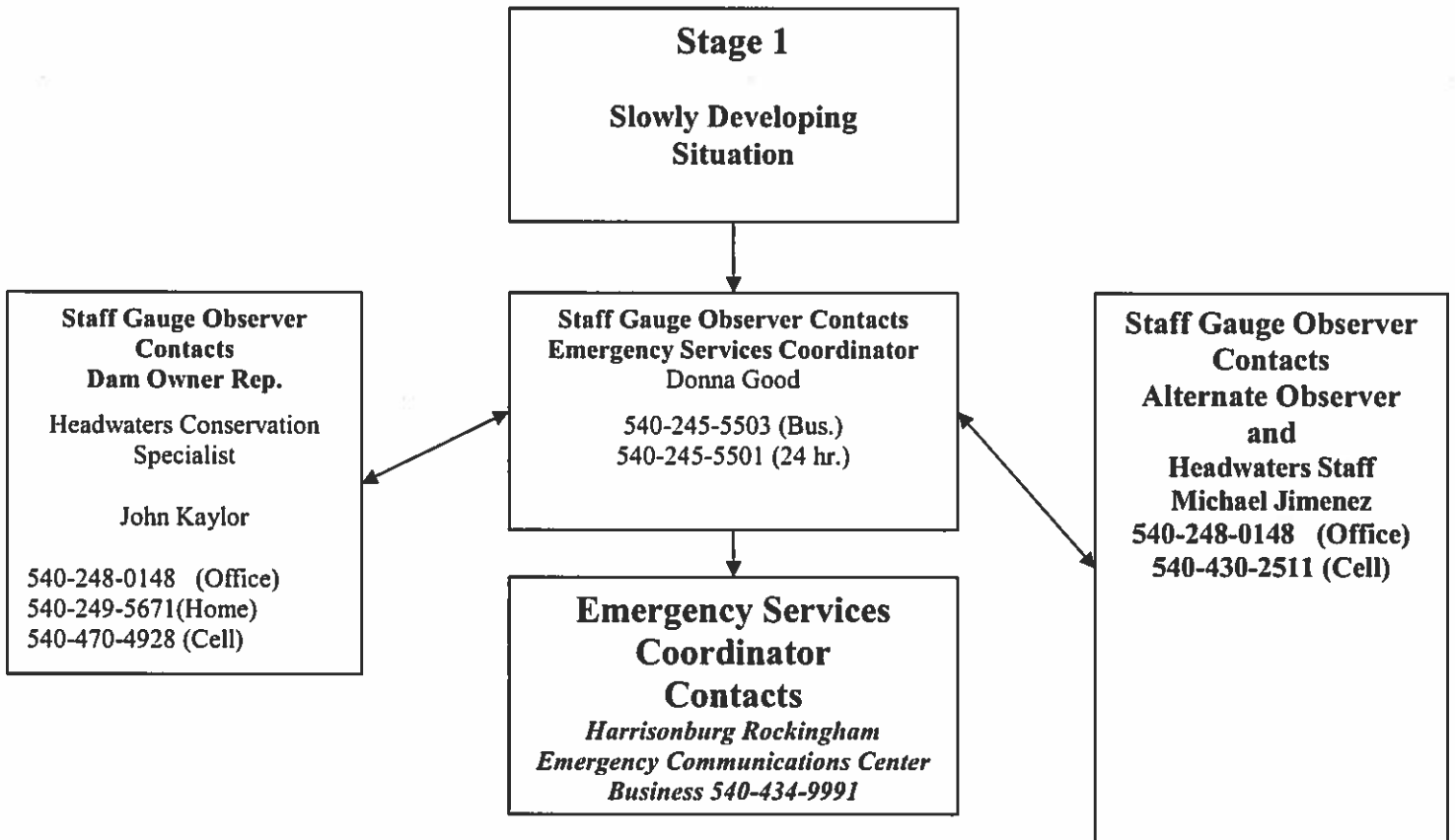
Emergency Definitions

1. Stage 1 – Non-failure Condition, Slowly developing. This classification indicates a situation is developing such that the dam is not in danger of failing, but if it continues failure may be possible.
2. Stage 2 – Potential Failure, Rapidly Developing. This classification indicates that a situation is developing that could cause the dam to fail if the causative factor continues.
3. Stage 3 – Imminent Failure. This classification indicates dam failure is expected or occurring and may result in flooding that will threaten life and property.

II. NOTIFICATION FLOW CHARTS

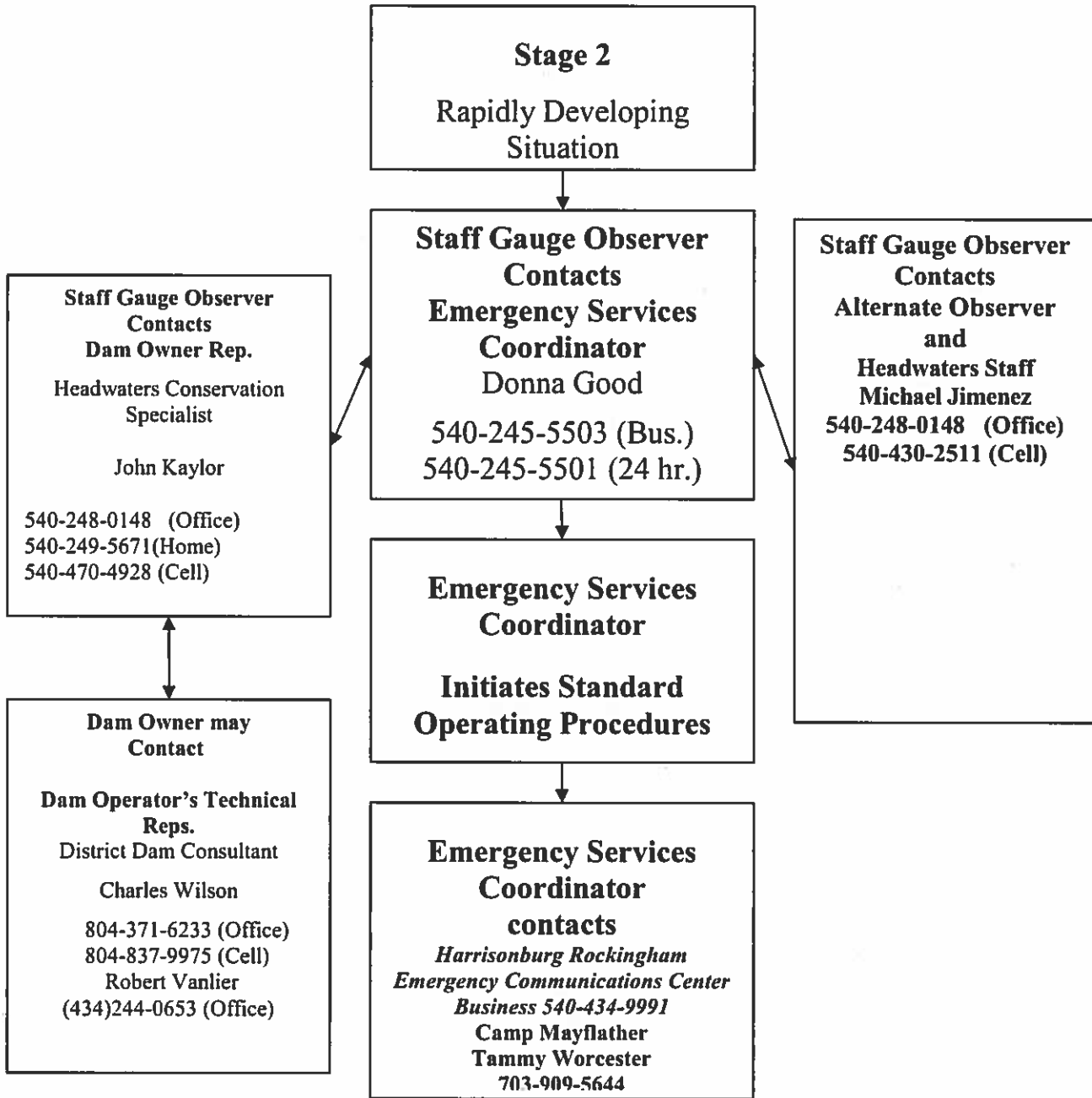
THE FOLLOWING IS THE CALLING PROCEDURE AS THE EMERGENCY DEVELOPES - CALLING DIAGRAM

STAGE 1



Message from staff gauge observer to ESC: *I am responding to **Hearthstone Dam** to begin staff gauge observations as recommended in the emergency action plan at least once a day.*

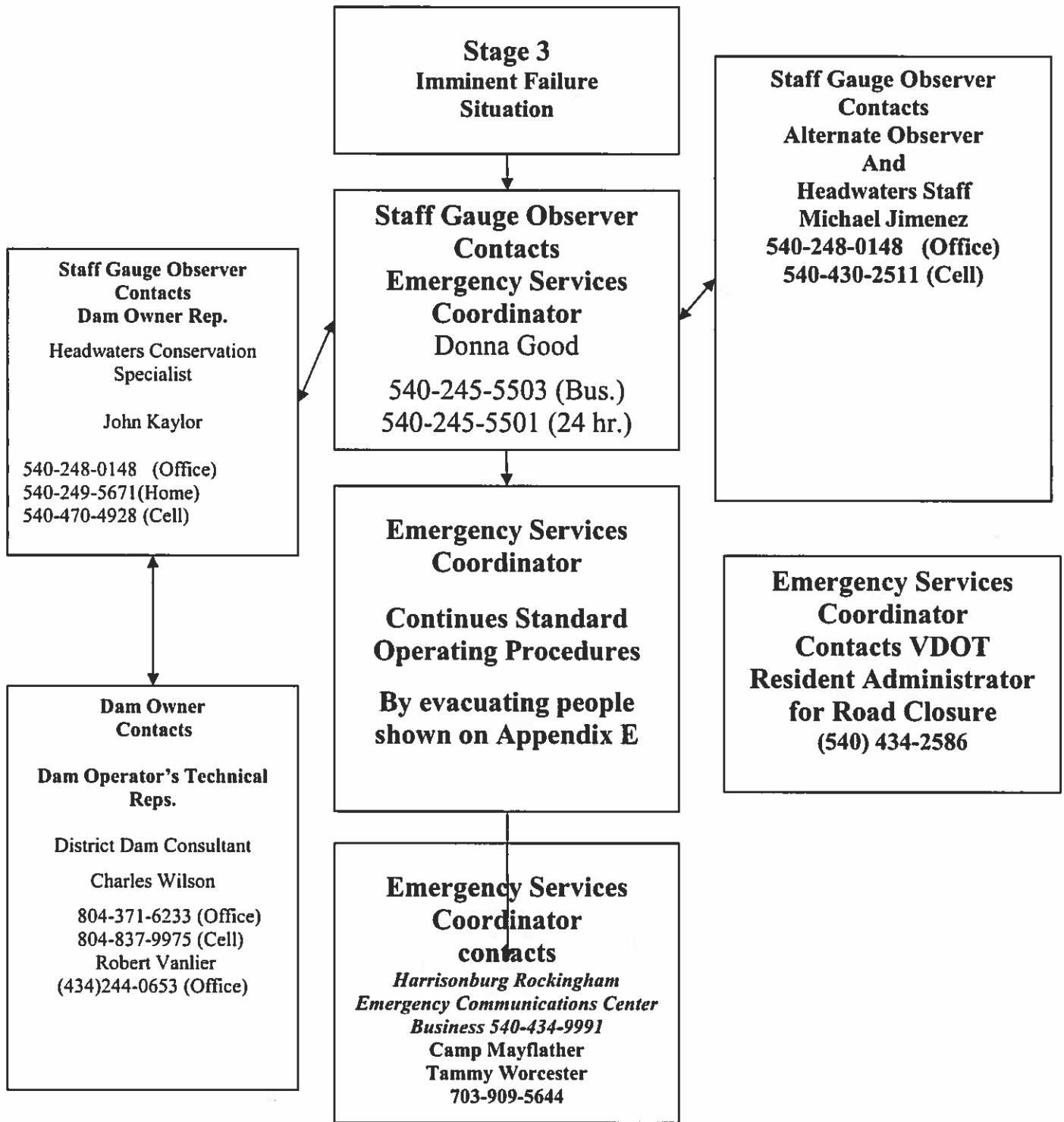
STAGE 2



Message from staff gauge observer to ESC: *I am at **Hearthstone Dam** (or have been to the dam) and the water level has risen in the emergency spillway to the threshold established in the emergency action plan to increase to the Stage 2 hazard level. Please mobilize your personnel in case an evacuation is necessary and continue to initiate your standard operating procedures (SOP). I will be observing the emergency spillway at least twice a day now.*

Note: Standard Operating Procedures shall include mobilization of the evacuation team, contacting the National Weather Service for rainfall projections and contacting the state Department of Emergency Management.

STAGE 3



Message from staff gauge observer to ESC: *I am at Hearthstone Dam (or have been to the dam) and the water level has risen in the emergency spillway to the threshold established in the emergency action plan to increase to the Stage 3 hazard level. Please have your personnel evacuate the people listed in our emergency action plan and close the roads downstream from our dam. I will remain at the dam until the dam breaks or the water level recedes to safe levels to provide you with additional information as necessary.*

NAME, ADDRESS AND TELEPHONE NUMBER OF HOMEOWNERS AT RISK, COMMERCIAL BUSINESS AT RISK AND LAND IN THE DAM BREAK INUNDATION ZONE

The following list is provided in proximity order so that at risk home owners and business owners closest to the dam are contacted first then after all occupied dwellings/business are notified the landowners with property in the dam break inundation zone will be notified for possible relocation of horse/cattle and equipment.

Name, address and telephone number of all occupied dwellings and commercial or recreational establishments that would be affected in the event of a dam failure.

<u>Name</u>	<u>Address</u>	<u>Telephone Number</u>
-------------	----------------	-------------------------

<u>See List Attached as Appendix E</u>		

Name, address and telephone number of owners of property, land and unoccupied buildings that would be affected in the event of a dam failure, and/or mapping of the affected area.

<u>Name</u>	<u>Address</u>	<u>Telephone Number</u>
-------------	----------------	-------------------------

<u>See List Attached as Appendix E</u>		

III. STATEMENT OF PURPOSE

“The purpose of this emergency action plan is to safeguard the lives and reduce damage to the property of citizens of **Augusta County & the Town of Stokesville** living and/or working along **Little River & the Upper North River**, in the event of failure of **Upper North River Dam #77, #015007, Hearthstone Dam**.

Impounded water upstream of a dam when released uncontrollably may threaten lives in the flow path downstream or cause damage to homes, roads, bridges and any other infrastructure in its way. This uncontrolled release occurs when the dam or a part of the dam breaks and stored water is released.”

IV. PROJECT DESCRIPTION

Upper North River Dam #77, #015007, aka Hearthstone Dam in Augusta County is located 2 miles upstream from **FR 95 on Little River**. **No significant regulated dams exist downstream** from this dam on **Little River or the Upper North River**. The watershed to this dam is entirely contained within the **George Washington National Forest**.

The Town of Stokesville and properties along the North River in **Augusta County, Rockingham County** and the **Town of Bridgewater** may be affected if this dam breaches.

V. EMERGENCY DETECTION, EVALUATION, & CLASSIFICATION

The dam owner as shown in Section I., under Item 3. is responsible for operation and maintenance of this dam. The dam operator as designated in this EAP is **Headwaters SWCD** as shown in Section I., Item 4 and the staff gauge observers are shown in Section I., Item 5.

Generally speaking the staff gauge observers initiate this emergency action plan based on the issuance of a flood watch or flood warning in the area. Water level rise in the pond may eventually cause the emergency spillway to flow and water depth/rainfall received triggers heightened alert status. Other events that may cause dam problems have also been discussed in this document. Since public safety is the reason that this document is being written, it is incumbent on all parties associated with this document to work together as a team. While it is the staff gauge observer’s responsibility to initiate this process, the dam owner or County Emergency Services Coordinator (ESC) may contact each other to notify the team that a flood watch has been initiated locally by the National Weather Service and everyone should start their duties as required in this EAP.

In this section the specific milestones that trigger the progression from Stage I (slowly developing condition, dam not in danger of failure but downstream flooding possible), to Stage II (rapidly developing condition that could cause the dam to fail if conditions continue to escalate) to Stage III (impending failure/evacuation) are set. Depth of flow through the emergency spillway is the better indication of field conditions and should be used. In the absence of actual flow depth data through the emergency spillway, inches of rainfall received in the watershed may be substituted for verified depth of flow information.

A. The amount of flow in emergency spillway that will initiate a:

Stage II Condition 1.0 feet

Stage III Condition 2.0 feet

Total depth of emergency spillway available before crest of dam is overtopped: 5.3 feet.

B. Amount of rainfall that will initiate a:

Stage II Condition 5.0 inches per 6 hrs.
6.0 inches per 12 hrs.
8.0 inches per 24 hrs.

Stage III Condition 8.0 inches per 6 hrs.
9.0 inches per 12 hrs.
10.0 inches per 24 hrs.

C. Frequency of observations by rainfall/staff gauge observer during:

Stage I 24 HRS; Stage II 12 HRS; Stage III Continuous.

Gauge Observer shall establish access routes to dam bearing in mind that roads crossing even small streams may be flooded. This access determination is discussed later in this document.

D. Public Roads Downstream from this Dam:

State roads do exist downstream from this dam. These roads are shown below and should be closed when the Stage III condition is met or sooner if the local flooding situation requires it.

The resident administrator, Virginia Department of Transportation, with address and telephone numbers is shown below.

Name: Don Komara, Resident Administrator

Address: 3536 North Valley Pike, Harrisonburg, VA 22802

Telephone: (Business)(540) 434-2586; (Residential) (540) 432-1316

Route # FR95, 1.3 Miles; Route # 730, 3.8 Miles;

Route # _____, _____ Miles; Route # _____, _____ Miles.

E. Table 2: Guidance, determining the proper emergency stage for various situations.

Event	Situation	Emergency Level
Spillway Flow	Spillway flowing with active gully erosion	2
	Spillway flowing with advancing head cut that is threatening the control section	3
Embankment Overtopping	Any overtopping flow within 2 feet of the top of the dam, water level rising	3
Seepage	New seepage areas on or near the dam	1
	New seepage areas with cloudy discharge or increasing flow rate	3
	Rapid flow rate increase with cloudy discharge from existing seepage area(s)	3
Sinkholes	Observation of new sinkhole on embankment	1
	Rapidly enlarging sinkhole	3
Embankment Cracking	New cracks in the embankment greater than 1/4 inch wide without seepage	1
	Cracks in embankment with seepage	1
Embankment Movement	Visual movement of the embankment slope	1
	Sudden or rapidly progressing slides of the embankment slopes	3
Vortex in Pond	Whirl pool with discharge downstream	3
Earthquake	Measurable earthquake felt or reported on or within 50 miles of the dam	1
	Earthquake resulting in visible damage to the dam	1
	Earthquake resulting in potential uncontrolled release of water from the dam	3
Security Threat, Sabotage & Vandalism	Verified bomb threat that, if carried out, could result in damage to the dam	1
	Detonated bomb that has resulted in damage to the dam or its appurtenances	1
	Damage to the dam or appurtenances with no impacts to the functioning of the dam	1
	Damage to the dam or appurtenances that has resulted in seepage flow	1
	Damage to the dam or appurtenances that has resulted in a potential uncontrolled water release	3

VI. GENERAL RESPONSIBILITIES UNDER THE EAP

A. Impounding Structure Owner Responsibilities

1. The dam owner/operator **IS RESPONSIBLE** for notifying local government of any problem or potential problem at the dam site.
2. The dam owner/operator **WILL INITIATE** dam surveillance under Stage I conditions, ie, when a flood watch is issued by the National Weather Service.
3. The dam owner/operator **WILL DETERMINE** when Stage II conditions are met at the dam.
4. The dam owner/operator **WILL DETERMINE** when Stage III conditions are met at the dam.
5. The dam owner/operator **WILL BE RESPONSIBLE** for operating such devices as spillway gates and low level outlets such as to cause the dam to function effectively.

B. Responsibility for Notification

1. The dam owner/operator **WILL NOTIFY** the 24-hour dispatch center or Emergency Services Coordinator before beginning dam surveillance under Stage I conditions.
2. The dam owner/operator **WILL NOTIFY** the 24-hour dispatch center and/or the local Emergency Services Coordinator when Stage II conditions are met in order to alert them to review actions that may be required for the safety and protection of people and property and to mobilize their evacuation team.
3. The dam owner/operator **WILL NOTIFY** the 24-hour dispatch center and/or the local Emergency Services Coordinator to initiate warning/ evacuation of residents when Stage III conditions or imminent dam failure are probable.

C. Responsibility for Evacuation

1. The county emergency services manager **WILL NOTIFY** the people, business owners and land owners as shown on page 8 or in Appendix E. to evacuate in the event Stage III conditions are met.
2. The Emergency Services Coordinator or 24-hour dispatch center **WILL PREPARE** Standard Operating Procedures (SOP's) to implement in the event that dam failure is possible or occurring. These SOP's shall include evacuation plans.

3. The Emergency Services Coordinator **WILL CONTACT** the Virginia Department of Transportation (VDOT) or other authorized personnel to set up barricades to close roads where flood waters will cross on the roads shown on page 10.

D. Responsibility for Termination & Follow-UP

1. Once the Stage III condition has been met the staff gauge observer will remain at the dam to provide the Emergency Services Coordinator (ESC) with information concerning water level rise, erosion in the emergency spillway and/or dam overtopping. It is particularly important for the ESC to know when the breach is occurring to evacuate their rescue personnel. The staff gauge observer will remain at the dam until the dam breaks or the water level recedes and major erosion stops.
2. In most areas of the state flooding will occur prior to any incident at this dam and continue for long periods of time. In most cases the staff gauge observers will have left the dam under the conditions of 1. above but county staff will continue with issues unrelated to the dam in their normal duties. For this reason we feel that the termination responsibility should be with the county/municipal government.
3. Follow-Up exercises to determine strengths and weakness' in the emergency action should be conducted as soon after the emergency has passed as possible while the experience is fresh in the minds of those living through it. The Soil & Water Conservation District will take the lead in coordinating this exercise in an effort to improve the overall emergency action plan.

E. EAP Coordinator Responsibility

The EAP Coordinator for the Soil & Water Conservation District shall be the Dam Safety Committee Chairman or the conservation specialist specifically assigned these duties. In the event no dam committee chairman or conservation specialist has been appointed by the district, the Chairman of the Board for the Soil & Water Conservation District shall be the EAP Coordinator.

The EAP coordinator will act as the district's representative in all issues between the municipal government and the Soil & Water Conservation District. The coordinator may, at their option, appoint others to provide specific information or do other required tasks as necessary to complete this EAP.

The EAP Coordinator will be assisted by the Department of Conservation & Recreation (DCR), Division of Division of Dam Safety and Floodplain Management's District Dam Safety Consultant in matters related to this EAP.

F. Methods for notification and warning to evacuate include:

- (1) Telephone/Reverse 911 automated warning systems
- (2) Police/fire/sheriff radio dispatch vehicles with loudspeakers, bullhorns, etc.
- (3) Personal runners for door-to-door alerting.
- (4) Radio/television broadcasts for area involved.

Check appropriate method(s); **All methods are appropriate and should be addressed in the SOP if used.**

G. Evacuation Procedures:

1. Once local government has been notified of any problem at a dam site, it will take appropriate protective measures in accordance with the local Emergency Operations Plan, the accompanying Emergency Action Plan and Standard Operations Procedures.
2. Monitoring the situation and, if time permits, review of evacuation plans.
3. Begin Alert, Notification, and Warning
4. Immediately evacuating the inundation areas, if conditions warrant.
5. Expanding Direction and Control as well as beginning Emergency Public Information and operating shelters.
6. Provide Situation Reports to the State Emergency Operations Center (804-674-2400 or 800-468-8892)

VII. PREPAREDNESS

A. Surveillance

This dam is unattended under normal operating conditions.

District management and staff should monitor the status of weather fronts through the National Weather Service (NWS). The NWS maintains a hurricane center that reports on hurricanes, tropical storms & tropical depressions as they travel and affect coastal and inland areas. The web site address is: <http://www.nhc.noaa.gov/>

The expected response time to the dam from the staff gauge observer's home to the dam should be less than one (1) hour from the time they receive the information that a flood watch has been declared. The staff gauge observer should never put themselves in harms way, however. In the event a hurricane or tropical depression occurs with high winds the staff gauge observer shall only venture out when weather conditions permit safe dam access.

Preplanned access routes should be chosen given that even small streams crossing state roads may flood preventing safe access. The gauge observers and district staff should never attempt to cross a road that has flood water crossing it at a depth greater than one (1) foot unless the vehicle is specially equipped for that purpose.

Alternative routes should be chosen for access by foot in the event that a car is unsafe for use. Other alternative means of transportation may be considered.

B. Response During Periods of Darkness

The staff gauge has been provided on a VDOT sign format and can be easily read from the location chosen by the staff gauge observer with a flashlight after dark.

The staff gauge observer should check the emergency spillway for erosion once the spillway starts to flow by crossing the top of the dam, if necessary. The staff gauge observer should monitor the water level and go to higher ground when the level rises to within one (1) foot of overtopping the dam.

C. Access to the Site

Access to the site in all weather conditions has been preplanned by the staff gauge observer and alternate observer to avoid areas of flooding. See paragraph A above for alternate access planning by foot or other means.

D. Response During Weekends & Holidays

Staff gauge observers live locally and will respond as needed on a 24 hours per day and a 7 days per week basis. When staff gauge observers leave the area they should contact each other so coverage in the event of a problem will continue.

E. Response During Adverse Weather

The staff gauge observer should never put themselves in harms way. In the event a hurricane or tropical depression occurs with high winds the staff gauge observer should only venture out when weather conditions permit.

Each staff gauge observer and/or district personnel should have protective clothing adequate to ensure their safety at all times during any response to the dam.

F. Alternative Systems of Communications

Communications during a major rainfall event may be problematic. Telephone land lines should be used as the first means of communication. Cellular telephones may be used to supplement the land lines. Unfortunately, telephone lines like electrical lines are subject to being broken by falling trees so radio communication during these events is normally required. Use of the County FM crystal radio system is recommended and the dam owner/staff gauge observers should purchase a radio system and charger from the County with the emergency services channel included for communication purposes in the event telephone and power systems go down. The district has also purchased a satellite phone that can be used in remote areas where normal cell signal is not available.

G. Emergency Supplies

Stockpiling of Materials & Equipment: During a functional exercise held for another dam in this area, the local VDOT equipment yard personnel decided that they would not be able to respond to this area from their current location due to local flooding. It was recommended that barricades be stock piled at the local fire and rescue building so roads could be closed as needed. The situation with this dam is similar to the situation at this dam so discussion should be held with all parties involved.

No other remedial repairs were recommended at this site, except sand and sandbags could be used to stabilize erosion in the emergency spillway and on top of the dam if conditions warranted the use. Under no circumstances should heavy construction equipment be allowed on the top of the dam once overtopping occurs.

VIII. INUNDATION MAPS



IX. COORDINATION BETWEEN OWNER/LOCAL GOVERNMENT

Acknowledgement by Owner/Operator

CERTIFICATION BY OWNER

I certify that a copy of this plan has been filed with Augusta, Rockingham, Town of Bridgewater the local Emergency Services Coordinator. Also, that a copy of this form has been filed with the State Department of Emergency Management; that this plan shall be adhered to during the life of the project; and that the information contained herein is current to the best of my knowledge.

Signed: [Signature] Owner's Signature
Print Name

This August day of 3, 20 18.

Acknowledgement by Local Government

Procedures for the warning and evacuation of Augusta County(through Donna Good, Emergency Services Coordinator), Rockingham County, (through Jim Junkins, Harrisonburg/Rockingham Emergency Operation Center), and Town of Bridgewater, (through Betsy Putney) residents as required in the event of actual or impending failure of the Upper North River Dam #77 have been coordinated with the dam owner/operator, and a copy of this Emergency Action Plan is filed with the Locality's Emergency Operation Plan.

[Signature] this 2 day of August 2018
Signature of Augusta County Official

Printed Name DONNA J. GOOD Position Emergency Coordinator

[Signature] this 2 day of Aug 2018
Signature of Rockingham County Official
Town of Bridgewater

Printed Name Betsy Putney Position Public Works Coordinator

[Signature] this 3 day of Aug 2018
Signature of Town of Bridgewater Official
Rockingham County

Printed Name Jeremy Holloway Position Chief Emergency Coordinator

This form provides a format that would provide the minimal amount of information necessary to initiate an emergency evacuation; local officials may require additional information.

Mail to:

Virginia Department of
Emergency Management
1051 Trade Court
Richmond, Virginia 23236-3713

Dept. of Conservation & Recreation
Dam Safety Division
Regional Dam Safety Engineer
203 Governor Street, Suite 206
Richmond, Virginia 23219-2094

APPENDIX A

INVESTIGATION & ANALYSIS OF IMPOUNDING STRUCTURE FAILURE FLOODS

Limitations & assumptions discussion for the dam break inundation study.

Driving Directions to Upper North River # 77 Hearthstone and Upper North River # 10 Todd

From I-81 take exit 225 – Woodrow Wilson Parkway (Rt. 275) Travel west on Woodrow Wilson Parkway

At Route 11 intersection continue west on Woodrow Wilson Parkway (Rt. 275)

At the intersection with Churchville Ave. turn right onto Churchville Avenue (Rt. 250)

Proceed 9.4 miles through the town of Churchville

At the end of the town turn right onto Scenic Highway (Rt. 42) - (small shopping area off to the right)

Proceed approximately 6 miles and turn left onto Bunker Hill Road (Rt. 760) – just over the Moffett Creek Bridge on curve

Proceed to the dead end intersection, STOP, and turn left, west onto Freemason Run Road (Rt. 747) - (it is a dead end! Nothing but a steep hill if you do not stop)

Bear slightly right onto Rt. 730 to its intersection in Stokesville

Turn left which is still Rt. 730 until you cross the Iron Bridge and continue straight which is Rt. 718

Just as you pass the Girl Scout camp follow the USFS signs on Tillman road to Hearthstone approximately 2 miles

APPENDIX B

PLANS FOR TRAINING, EXERCISING, UPDATING, & POSTING THE EAP

1. Training

Emergency action planning, generally, will be offered all Soil & Water Conservation Districts once a year. The schedule for this training may vary but this training opportunity is usually offered during the month of May.

- a. Included in this training will be a generic version of a table top exercise that requires the decision to evacuate homes and business in harms way downstream.**
- b. Time available a second scenario will be presented that does not lead to an evacuation order being given.**

2. Exercises

- a. Table Top Exercises - Table top exercises will be held, at a minimum, once every 6 years. This exercise will occur in the year that certification is required.**
- b. Drills - A drill will be conducted each year by the owner except when a table top exercise is required.**

3. Updating

This emergency action plan will be checked yearly during the drill exercise by the Soil & Water Conservation District to determine if names, addresses and telephone numbers of the people shown in Section II. are accurate. The document will be updated at any time when a major change is determined to have occurred.

4. Posting

This document will be on file with the Soil & Water Conservation District, the County Office of the Emergency Services Manager, the DCR Division of Dam Safety, the DCR Division of Conservation & Recreation – Dam Safety Consultant, and at the Department of Emergency Management.

APPENDIX C

SITE SPECIFIC CONCERNS

The capacity of the auxiliary spillway will be significantly reduced due to construction activity reducing flow area.

The integrity of the auxiliary spillway will be significantly reduced because the surface will be torn up and not well armored with grass.

The riser will be modified leaving it vulnerable to plugging in high flow events but this should not be considered a public safety concern unless it is prolonged and unaddressed.

The dam will be more vulnerable when the toe drain is being upgraded.

Tillman Rd. will be closed and access will be limited.

Access to the Carrey's/Freemans camp will be from the Briery Branch end.

APPENDIX D

ADDITIONAL RESOURCES

DIRECTORY OF ADDITIONAL PERSONNEL WITH DAM SAFETY EXPERTISE

In addition to personnel shown elsewhere in this plan, the following list identifies other individuals with expertise in dam safety, design and construction that may be consulted about taking specific actions at the dam when there is an emergency situation:

<u>Name</u>	<u>Telephone</u>	<u>Responsibility</u>
<u>DCR Division of Dam Safety</u>	<u>(804) 371-6233</u>	<u>Charles Wilson, District Dam Safety Consultant</u>
<u>DCR, Division of Dam Safety</u>	<u>(434) 244-0653</u>	<u>Robert J. Vanlier, Regional Engineer</u>
<u>Alternate:</u>		
<u>DCR District Engineering Services</u>	<u>(804)786-0113</u>	<u>Amanda Pennington,</u>
	<u>Cell: (804)229-1425</u>	<u>District Engineering Services Manager</u>

Emergency Services Contacts

Agency / Organization	Principal contact	Address	Office telephone number	Alternate telephone numbers
Augusta County Emergency Services Coordinator	Donna Good	Emergency Communication Center, 18 Government Center Lane, P.O. Box 590 Verona, VA 24482-0590	540-245-5503	540-245-5501 (24 hr.)
Augusta County Fire Departments		Emergency Communication Center, 18 Government Center Lane, P.O. Box 590 Verona, VA 24482-0590	540-245-5501 (24 hr.)	
Augusta County Sheriff	Donald Smith	127 Lee Hwy, P.O. Box 860, Verona, VA 24482	540-245-5333	
Augusta County Board of Supervisors			540-245-5600	540-245-5501
Buckingham Branch Railroad	24 Hour Call Center	650 C&O Flats Staunton, VA 24401	540-887-2210 (24 hr.)	

City of Waynesboro Emergency Management	Gary P. Critzer, Director	250 S. Wayne Ave, Suite 301 Waynesboro, Va. 22980	540-942-6698 540-942-6701(24 hr) 241-2298 (cell)	
Rockingham/Harrisonburg Emergency Communication Center	Jim Junkins	101 N. main street 5 th floor, Harrisonburg, VA 22802	540-434-9991 540-434-2004 (fire rescue)	540-820-6911
Headwaters Conservation District	John Kaylor * Conservation Specialist	70 Dick Huff Ln Verona, VA 24482	540-248-0148	540-249-5671 (H) 540-470-4928 (C)
Headwaters Conservation District	Michael Jimenez Dam Technician	70 Dick Huff Ln Verona, VA 24482	540-248-0148	540-430-2511 (C)
Headwaters Conservation District	Cathy Perry* Office Administrator	70 Dick Huff Ln Verona, VA 24482	540-248-0148	xxx-xxx-xxxx (H) xxx-xxx-xxxx (C)
Headwaters Conservation District	Josh Walker Conservation Technician	70 Dick Huff Ln Verona, VA 24482	540-248-0148	
Headwaters Conservation District	Jason Wilfong Conservation Technician	70 Dick Huff Ln Verona, VA 24482	540-248-0148	
Headwaters Conservation District	Rachel Mcculler Conservation Technician	70 Dick Huff Ln Verona, VA 24482	540-248-0148	
Headwaters Conservation District	Conservation Technician	70 Dick Huff Ln Verona, VA 24482	540-248-0148	
Headwaters Conservation District	Aaron Lucas Conservation Technician	70 Dick Huff Ln Verona, VA 24482	540-248-0148	
Natural Resources Conservation Service	Charles Ivins District Conservationist	70 Dick Huff Ln Verona, VA 24482	540-248-6218, ext. 3	
Natural Resources Conservation Service	Mathew Lyons State Engineer	1606 Santa Rosa Road, Suite 209 Henrico, VA 23229- 5014	804-287-1653	xxx-xxx-xxxx (H) 804-356-2551 (C)
Sterling Weather	Senior Forecaster on duty		703-996-2202	
Town of Bridgewater	John Ware		540-607-0927	
Norfolk and Southern Railroad			800-453-2530	
United States Forest Service	David A. Whitmore, Forester		(540) 291-5222 540-291-2188	

George Washington and Jefferson National Forests – Glenwood & Pedlar Districts			540-265-5100 24-hr	
USFS North River District	Mary Yonce	401 Oakwood Dr. Harrisonburg, VA	540-984-4101	
United States Forest Service 24 emergency number		Roanoke	540 265-5100 (24 hr)	
Virginia Department of Transportation	Don Komara Resident Administrator	P.O. Box 940 Verona, VA 24482	540-434-2586	540-432-1316
VDOT Traffic Operations Center			540-332-9500	
Virginia Division of Dam Safety and Floodplain Mgt.	Robert J. Vanlier Dam Safety Regional Engineer	900 Natural Resources Dr, Room 2028 Charlottesville, VA 22903	434-244-0653	434-975-3512
Virginia State Police			800-552-0962	
Virginia Emergency Operations Center	24/7 Dispatcher	7700 Midlothian Turnpike Richmond, VA 23235	804-674-2400	
Virginia IFLOWS (during emergency contact the Virginia Emergency Operations Center)	Daniel Bradway	7700 Midlothian Turnpike Richmond, VA 23235	804-674-2400	

SUPPLIES AND RESOURCES

In an emergency situation, equipment, supplies and other resources might be needed on short notice, such as sandbags, rip rap, fill material, and heavy equipment. The table below lists resources that may be helpful and indicates contacts to access them.

<u>Earth Moving Equipment</u>	<u>Rip rap</u>	<u>Sand & Gravel</u>
Eavers Bros Excavating, Inc. 355 Draft Ave. Stuarts Draft, VA 540-337-1151	Vulcan Materials Co. 327 Luck Stone Rd. Staunton, VA 540-886-6758	D.M. Conner 100 Lake Rd Stuarts Draft, VA 540-337-1553
	Belmont Quarry 251 National Avenue Staunton, VA 540-886-2111	Belmont Quarry 251 National Avenue Staunton, VA 540-886-2111
Howdyshell Excavating, Inc 682 North River Rd Mt. Solon, VA 22843 540-350-2471		Shenandoah Stone 5047 Cold Springs Road Raphine, Virginia 24472 540-377-6038
Eddie's Excavating, Inc. 472 Willow Spout Rd Verona, VA 24482 540-248-4609		Acres Sand and Stone 98 Lake Rd Stuarts Draft, VA 540-337-5229
Loyd's Lumber & Excavating Frank Loyd 825 Stokesville Rd Mt. Solon, VA 22843 540-480-7252		Vulcan Materials Co. 327 Luck Stone Rd. Staunton, VA 540-886-6758
Crummett Construction Co. 1043 Todd Rd. Mt. Sidney, VA 24467 540-885-8118		
<u>Sandbags</u>	<u>Pumps</u>	<u>Pipe</u>
Griffith Bag Company 510 Waterman Drive Harrisonburg, VA 22802 540-433-2615 800-433-2615	Central Virginia Rentals 2482 Jefferson Hwy Waynesboro VA 540-943-1979 708 Richmond Rd Staunton VA 540-886-7500	Hajoca Corporation 401 Commerce Rd Staunton, VA 540-886-0787
	8" Trash Pump	May Supply Company

	Carter Equipment: 4463 Early Rd Harrisonburg, VA 22801 Phone: (800)-228-7971 Mobile: (540)-209-4109	May Supply Company 1775 Erickson Avenue Harrisonburg, VA 540-433-2611
		Ferguson Enterprises 14 Angela Ct Fishersville, VA 22939 540-324-1021
<u>Lighting Equipment</u>	<u>Laborers</u>	<u>Other</u>
Central Virginia Rentals 2482 Jefferson Hwy Waynesboro VA 540-943-1979 708 Richmond Rd Staunton VA 540-886-7500	See contractors' list for earth moving equipment	Camp May Flather Tammy Worcester Property Manager 703-909-5644 Po box 580 Upperville, VA 20185 540.592.3133 Gscnc.org
Carter Equipment: 4463 Early Rd Harrisonburg, VA 22801 Phone: (800)-228-7971		

APPENDIX E- Rockingham County and Town of Bridgewater maintain their own list.
 OTHER – List of Homes, Business & Properties at risk downstream from this dam continued from or replacing the list on Page 8.

OWNERNAME	PROPADDRESS	MAILADDRESS	MAILCITY	MAILSTATE	MAILZIP 4	MAILZIP 5	PHONE
ANDREW BILLIE E & BONNIE J	2377 NORTH RIVER RD	9615 COMMUNITY CENTER RD	BRIDGEWATER	VA		22812	
ANDREWS CARROLL L 1/3 ETAL		932 NORTH RIVER RD	MOUNT SOLON	VA		22843	
ARMSTRONG MICHAEL EUGENE	30 CAMARO LN	30 CAMARO LN	MOUNT SOLON	VA		22843	
AUVILLE SHARON C	1134 GEORGE WALTONS RD	396 STOVER SHOP RD	CHURCHVILLE	VA		24421	
BACK CHARLES L JR	54 GRINDSTONE RD	54 GRINDSTONE RD	BRIDGEWATER	VA		22812	
BARLOW THEODORE OR JOYCE	584 TOWERS RD	584 TOWERS RD	MOUNT SOLON	VA		22843	
BARNES CARL P JR OR NATALIE J	88 GOLDEN ROD LN	88 GOLDEN ROD LN	MOUNT SOLON	VA		22843	
BEAM THOMAS R 1/3 ETAL	493 TILMAN RD	P O BOX 300	STAUNTON	VA		24402	
BENNETT HAROLD R OR RONNA LOU BENNETT	43 RED CLOVER LN	43 RED CLOVER LN	MOUNT SOLON	VA		22843	
BENTON RICHARD L		8261 SMITH MILL LN	BRIDGEWATER	VA		22812	
BERGDOLL ROBERT W OR JOANNA W	206 MILLERS SAW MILL RD	311 BRUCE ST	BRIDGEWATER	VA		22812	
BERRY ROBERT AST OR FRANCES F	TILMAN RD	1903 HICKORYRIDGE RD	RICHMOND	VA		23238	
BODKIN EDNA LOUISE APARTMENT #204		P O BOX 54	MOUNT SOLON	VA		22843	
BOSTIC GLENN D JR	1467 NORTH RIVER RD	1467 NORTH RIVER RD	MOUNT SOLON	VA		22843	
BOTKIN WILLIAM DEAN OR JUDY S	1013 NORTH RIVER RD	1013 NORTH RIVER RD	MOUNT SOLON	VA		22843	540-350-2281
BOTKIN-COVARRUBIAS TIMI	963 NORTH RIVER RD	971 NORTH RIVER RD	MOUNT SOLON	VA		22843	
BUNN HEIDI H OR NORRIS DIII	1759 NORTH RIVER RD	1759 NORTH RIVER RD	MOUNT SOLON	VA		22843	
CALE DAVID W OR CHEVIE L	282 TILMAN RD	282 TILMAN RD	MOUNT SOLON	VA		22843	540-350-2418
CARACOFE CHARLES E & CHRISTOPHER M	1360 GEORGE WALTONS RD	1360 GEORGE WALTONS RD	MOUNT SOLON	VA		22843	
CAREY HENRY B & SUSAN CAREY LENDERMON		1430 DOGWOOD RD	STAUNTON	VA		24401	540-886-3736
CARINI DAVID G OR BONNIE L	90 NORTH RIVER RD	90 NORTH RIVER RD	MOUNT SOLON	VA		22843	540-350-2177
CARTER BETTY SHULL (LIFE)	39 EMMANUEL CHURCH RD	39 EMMANUEL CHURCH RD	MOUNT SOLON	VA		22843	
CASADY NORMAN E & ZULA R	2392 NORTH RIVER RD	2392 NORTH RIVER RD	BRIDGEWATER	VA		22812	
CASH WAYNE C	204 NORTH RIVER RD	204 NORTH RIVER RD	MOUNT SOLON	VA		22843	540-350-2643
CASSIDY KARCH SETH OR MARY BETH CASSIDY	20 OLD C&W RAILWAY RD	788 BUNKER HILL RD	MOUNT SOLON	VA		22843	
CHANDLER SHARON LOUISE	21 WOLF RIDGE RD	21 WOLF RIDGE RD	BRIDGEWATER	VA		22812	
CHESAPEAKE WESTERN RAILWAY %NORFOLK SOUT		3 COMMERCIAL PL-BOX 209	NORFOLK	VA		23510	
CLINE DAVID KENNETH	711 FREEMASON RUN RD	711 FREEMASON RUN RD	MOUNT SOLON	VA		22843	
CLINEDINST CHARLES DAVID OR CONNIE Y	1263 FREEMASON RUN RD	1263 FREEMASON RUN RD	MOUNT SOLON	VA		22843	
CLINEDINST WINSTON (LIFE) & WILMA A (LI		571 BIG OAK DR	MANCHESTER	TN		37355	

COAL RUN LODGE INC %JAMES M RICCIONE	378 TILMAN RD	20242 MACGLASHAN TERRACE	ASHBURN	VA	20147
COLLINS JUDY CLINEDINST	1069 NORTH RIVER RD	1036 MCCORMICK AVE	CLIFTON FORGE	VA	24422
COOK LARRY E SR OR VIRGINIA A	58 MILLERS RD	58 MILLERS RD	BRIDGEWATER	VA	22812
COOK ROGER LEE OR RUTH CLINEDINST	1569 NORTH RIVER RD	1569 NORTH RIVER RD	MOUNT SOLON	VA	22843
COUNTY OF AUGUSTA VIRGINIA	66 NATURAL CHIMNEYS LN	P O BOX 590	VERONA	VA	24482
CRAMER CHARLES ALAN OR SHEILA S	36 PINE RIDGE LN	P O BOX 395	VERONA	VA	540-350-2398
CURRY TIMOTHY SCOTT OR KELLI DAWN	917 NORTH RIVER RD	917 NORTH RIVER RD	MOUNT SOLON	VA	22843
DAGGY H RUSSELL JR OR NANCY M	612 NORTH RIVER RD	612 NORTH RIVER RD	MOUNT SOLON	VA	22843
DELTA SPRINGS FARM INC		1142 FREEMASON RUN RD	MOUNT SOLON	VA	22843
DERROW MADGE	59 CAMARO LN	59 CAMARO LN	MOUNT SOLON	VA	22843
DERROW BRUCE S	223 GOLDEN ROD LN	223 GOLDEN ROD LN	MOUNT SOLON	VA	540-350-4586
DESPER KAREN S OR RONALD E	241 GOLDEN ROD LN	241 GOLDEN ROD LN	MOUNT SOLON	VA	540-350-4273
DIEHL JOYCE ETAL	2327 NORTH RIVER RD	P O BOX 72	MOUNT CRAWFORD	VA	703-893-0247
DOVE MARY WOODDELL OR DAVID ASHLEY ADDI	512 NORTH RIVER RD	8905 GALLANT GREEN DR	MCLEAN	VA	22102
DOVE LAWRENCE WAYNE	1673 NORTH RIVER RD	2551 JEFFERSON HWY	WAYNESBORO	VA	22980
DOWNEY REX GILBERT OR MARGARET MURIEL	288 NORTH RIVER RD	4945 SUMMER LN	EARLYSVILLE	VA	22936
DRIVER MADALENE M	384 EMMANUEL CHURCH RD	426 WHETSTONE DRAFT RD	MOUNT SOLON	VA	22843
DRIVER TIMOTHY K OR DENA C	298 NARROW BACK RD	298 NARROW BACK RD	MOUNT SOLON	VA	22843
DRIVER M L III OR MELISSA H	1796 NORTH RIVER RD	1796 NORTH RIVER RD	MOUNT SOLON	VA	22843
EAVERS MARY ETHEL 1/2 & MAX A DOVE OR	1593 NORTH RIVER RD	90 GARBERS CHURCH RD	HARRISONBURG	VA	22801
EAVERS EDWARD DANIEL (LIF	1615 NORTH RIVER RD	619 NORTH RIVER RD	MOUNT SOLON	VA	22843
EAVERS LORETTA J	619 NORTH RIVER RD	619 NORTH RIVER RD	MOUNT SOLON	VA	540-350-2796
ELLIOTT CHRISTOPHER H OR KATIE B	42 MAGGIE LN	1286 FADLEY RD	WEYERS CAVE	VA	24486
EMMANUEL CHOF THE BRTHREN %JERRICA SMIL		5736 HOUNDSCHASE LN	HARRISONBURG	VA	22801
EMMETT STACEY L	962 NORTH RIVER RD	962 NORTH RIVER RD	MOUNT SOLON	VA	22843
EMMETT JAMES R SR OR MOLLY H	948 NORTH RIVER RD	948 NORTH RIVER RD	MOUNT SOLON	VA	22843
EMMETT JOHNNIE E & BARBARA Z		6418 QUINN RD	FREDERICK	MD	21701
EPPARD JUDY B TRUST	980 NORTH RIVER RD	980 NORTH RIVER RD	MOUNT SOLON	VA	22843
EPPARD CARROLL W JR	992 NORTH RIVER RD	992 NORTH RIVER RD	MOUNT SOLON	VA	22843
EPPARD JUDY B TRUST	984 NORTH RIVER RD	980 NORTH RIVER RD	MOUNT SOLON	VA	22843
ERVINE BETTY CAROL ETAL % JOHN W ERVI	DORCAS RD	107 DORCAS RD	MOUNT SOLON	VA	22843
FEDERAL NATIONAL MORTGAGE ASSOCIATION	965 GEORGE WALTONS RD	14221 DALLAS PKWY STE1000	DALLAS	TX	75254
FIFER DOUGLAS W OR LEANNA S	1834 NORTH RIVER RD	1896 NORTH RIVER RD	MOUNT SOLON	VA	22843

KNOTT SHARON K 1/2 & STEWART KNOTT 1/2			6033 SHOFFER DR	ALEXANDRIA	VA	22310
KNOTT BOYD E OR DELORES M			262 LICK RUN RD	MOUNT SOLON	VA	22843
KOOGLER W DENNIS OR ANNE M			948 PIKE CHURCH RD	HARRISONBURG	VA	22801
LAM JAMES		213 TIMBER RIDGE RD	1991 STOVER SHOP RD	MOUNT SOLON	VA	22843
LAM KENT CARTER OR TAMI J DOVE		220 NORTH RIVER RD	220 NORTH RIVER RD	MOUNT SOLON	VA	22843
LAM WENDALL PRESTON OR MARIE MICHAEL			6872 WHITNEY LN	BRIDGEWATER	VA	22812
LAMBERT TRAVIS S		34 MILLERS SAW MILL RD	6057 COOKIE LN	BRIDGEWATER	VA	22812
LANDIS JOHN P OR KARA L		130 EMMANUEL CHURCH RD	130 EMMANUEL CHURCH RD	MOUNT SOLON	VA	22843
LANDIS-USHER BARBARA MICHELE		1205 GEORGE WALTONS RD	1205 GEORGE WALTON RD	MOUNT SOLON	VA	22843
LAYMAN DEBRA M		229 NARROW BACK RD	229 NARROW BACK RD	MOUNT SOLON	VA	22843
LAYMAN DWIGHT D JR OR TIFFANY MARIE		1772 NORTH RIVER RD	1772 NORTH RIVER RD	MOUNT SOLON	VA	22843
LEAP MICHELLE		34 SHULLS LN	34 SHULLS LN	MOUNT SOLON	VA	22843
LOSH AIMEE BETH		126 EMMANUEL CHURCH RD	126 EMMANUEL CHURCH RD	MOUNT SOLON	VA	22843
LOSH ERNEST WAYNE & BEULAH COOK LOSH		128 EMMANUEL CHURCH RD	128 EMMANUEL CHURCH RD	MOUNT SOLON	VA	22843
LOUGH BOBBIE K OR JOYCE C		400 OLD C&W RAILWAY RD	400 OLD C&W RAILWAY RD	MOUNT SOLON	VA	22843
LOYD CATHERINE A		825 STOKESVILLE RD	825 STOKESVILLE RD	MOUNT SOLON	VA	22843
LOYD FRANK EDWARD		88 NORTH RIVER RD	88 NORTH RIVER RD	MOUNT SOLON	VA	22843
LOYD JIMMY ALLEN OR BARBARA		145 NORTH RIVER RD	146 NORTH RIVER RD	MOUNT SOLON	VA	22843
MAKAYEV VALERIY L OR LYUBOV Y		945 NORTH RIVER RD	945 NORTH RIVER RD	MOUNT SOLON	VA	22843
MANDEVILLE DRAKE HODGES OR RHONDA HOLLO		199 NARROW BACK RD	199 NARROW BACK RD	MOUNT SOLON	VA	22843
MARSHALL JOHN T OR ANNETTE		157 NARROW BACK RD	157 NARROW BACK RD	MOUNT SOLON	VA	22843
MARTIN CARLYLE L OR GLORIA R1/2 ETAL		70 GRINDSTONE RD	975 COTTONTAIL TRL	MOUNT CRAWFORD	VA	22841
MAYS VIRGINIA CLINEDINST		1378 GEORGE WALTONS RD	1388 GEORGE WALTONS RD	MOUNT SOLON	VA	22843
MCCRAY NANCY A		1163 NORTH RIVER RD	1163 NORTH RIVER RD	MOUNT SOLON	VA	22843
MICHAEL CAROLYN D		1816 NORTH RIVER RD	1816 NORTH RIVER RD	MOUNT SOLON	VA	22843
MICHAEL LARRY G OR TERESA H		35 HEARTHSTONE LN	35 HEARTHSTONE LN	MOUNT SOLON	VA	22843
MICHAEL STACEY R OR ANGELA M		141 STOKESVILLE RD	141 STOKESVILLE RD	MOUNT SOLON	VA	22843
MICHAEL RONALD DALE			102 OLD C&W RAILWAY RD	MOUNT SOLON	VA	22843
MICHAEL ERNEST L & JOY E		413 OLD C&W RAILWAY RD	413 OLD C&W RAILWAY RD	MOUNT SOLON	VA	22843
MICHAEL WILLIAM MCCOY (LIFE)		38 MAGGIE LN	22 MAGGIE LN	MOUNT SOLON	VA	22843
MICHAEL STEVEN L OR SHEILA M		364 LICK RUN RD	364 LICK RUN RD	MOUNT SOLON	VA	22843
MICHAEL MARILYN L		1138 NORTH RIVER RD	1138 NORTH RIVER RD	MOUNT SOLON	VA	22843
MICHAEL JOANN T		239 GOLDEN ROD LN	239 GOLDEN ROD LN	MOUNT SOLON	VA	22843

MICHAEL RANDY E & SHERRY L	1185 GEORGE WALTONS RD	275 FARM LN	BRIDGEWATER	VA	22812
MICHAEL ELMIRA V EST OF		904 FREEMASON RUN RD	MOUNT SOLON	VA	22843
MICHAEL IMOGENE T	344 FREEMASON RUN RD	4327 SCENIC HWY	MOUNT SOLON	VA	22843
MILLER JUDY P & ROSE MARIE PLAUGHER		151 NARROW BACK RD	MOUNT SOLON	VA	22843
MILLER CHARLES LEON OR ANNABELLE	471 STOKESVILLE RD	29 CRESTWOOD DR	CHURCHVILLE	VA	24421
MILLER KIMBERLY D	105 SHULLS LN	105 SHULLS LN	MOUNT SOLON	VA	22843
MILLER ALLEN O JR & LINDA L	1115 GEORGE WALTONS RD	1115 GEORGE WALTONS RD	MOUNT SOLON	VA	22843
MILLS BETTIE P ESTATE %L P MILLS		3156 MINUET AVE	SALT LAKE CITY	UT	84119
MILSTEAD DAVID W OR JUDY B		4131 LUMBER MILL RD	DAYTON	VA	22821
MINNICK JASON SCOTT OR AMBER LEE MINNIC	2174 NORTH RIVER RD	2174 NORTH RIVER RD	MOUNT SOLON	VA	22843
MINNICK JAMES A OR AMY R	53 GRINDSTONE RD	53 GRINDSTONE RD	BRIDGEWATER	VA	22812
MITCHELL ROBERT E OR DONNA	1624 NORTH RIVER RD	1624 NORTH RIVER RD	MOUNT SOLON	VA	22843
MONGOLD TAMMY L	941 NORTH RIVER RD	941 NORTH RIVER RD	MOUNT SOLON	VA	22843
MOORE FRANK E OR BRENDA J RITCHIE-MOO	164 NORTH RIVER RD	164 NORTH RIVER RD	MOUNT SOLON	VA	22843
MORAN DARBY L 25% ETAL %NATALIE BARNE	161 GOLDEN ROD LN	88 GOLDEN ROD LN	MOUNT SOLON	VA	540-350-4193
MORAN JOHN PATRICK	124 GOLDEN ROD LN	9411 FOXTAIL PL	MC GAHEYSVILLE	VA	22840
MORRIS CHARLES JR	33 GRINDSTONE RD	3181 FRIEDENS CHURCH RD	MOUNT CRAWFORD	VA	22841
MORRIS RANDY L	883 NORTH RIVER RD	883 NORTH RIVER RD	MOUNT SOLON	VA	22843
MOSSY CREEK FARMS INC		398 MOSSY CREEK RD	MOUNT SOLON	VA	22843
MT SOLON PENTECOSTAL CHRCH PROPERTY COMP	977 NORTH RIVER RD	1062 NORTH RIVER RD	MOUNT SOLON	VA	22843
MT OLIVET UNITED BRETHREN IN CHRIST CHUR	862 FREEMASON RUN RD	862 FREEMASON RUN RD	MOUNT SOLON	VA	22843
NELSON KEITH W OR PHYLLIS A	1196 NORTH RIVER RD	1196 NORTH RIVER RD	MOUNT SOLON	VA	22843
NELSON KEVIN W OR DIANNE A RIDDLE	1204 NORTH RIVER RD	1204 NORTH RIVER RD	MOUNT SOLON	VA	22843
NORTH RIVER COUNTRY STORE LLC	1434 NORTH RIVER RD	43 RED CLOVER LN	MOUNT SOLON	VA	22843
NORTLEDGE SHANE LEE OR TIFFANY DERROW	209 GOLDEN ROD LN	223 GOLDEN ROD LN	MOUNT SOLON	VA	22843
OBRIEN MATTHEW L	1151 GEORGE WALTONS RD	1151 GEORGE WALTONS RD	MOUNT SOLON	VA	22843
PARKER WILLIAM C(LIFE)1/2 & MARGARET W	137 GRINDSTONE RD	137 GRINDSTONE RD	BRIDGEWATER	VA	22812
PARKER KEVIN A	89 GRINDSTONE RD	306 CHEROKEE RD	HAMPTON	VA	23661
PARKER & SON	490 NORTH RIVER RD	137 GRINDSTONE RD	BRIDGEWATER	VA	22812
PATTERSON PATRICIA B	371 TILMAN RD	11806 HENRY FLEET DR	POTOMAC	MD	301-424-0763
PAYNE CORY J AND JENNIFER L	204 OLD C&W RAILWAY RD	459 OLD C & W RAILWAY RD	MOUNT SOLON	VA	22843
PAYNE THOMAS L	578 NORTH RIVER RD	578 NORTH RIVER RD	MOUNT SOLON	VA	22843
PETERS RICHARD C OR SANDRA K	247 EUBANK RD	247 EUBANK RD	MOUNT SOLON	VA	22843

PHILYAW WILLIAM E ETAL %ORVEL E COOP			P O BOX 331	LOCUST GROVE	VA	22508
PITSENBARGER JEFFREY S OR KATHLEEN H	2162 NORTH RIVER RD		612 TIMBER RIDGE RD	MOUNT SOLON	VA	22843
PLAUGHER MARLENE J(LIFE)	272 TIMBER RIDGE RD		272 TIMBER RIDGE RD	MOUNT SOLON	VA	22843
POPLAR GROVE FARMS INC % ALLEN K EARLY			3985 RAWLEY PIKE	HARRISONBURG	VA	22801
PRATT NORMA L	1851 NORTH RIVER RD		1851 NORTH RIVER RD	MOUNT SOLON	VA	22843
PROPST JESSE M JR & DOROTHY V TRUS	1746 NORTH RIVER RD		1746 NORTH RIVER RD	MOUNT SOLON	VA	22843
PUFFENBARGER RICHARD A1/3 ETAL % HAROL	RED CLOVER LN		43 RED CLOVER LN	MOUNT SOLON	VA	22843
PUFFENBARGER LORA A	45 RED CLOVER LN		45 RED CLOVER LN	MOUNT SOLON	VA	22843
PUFFENBARGER JOHNNY L	47 RED CLOVER LN		47 RED CLOVER LN	MOUNT SOLON	VA	22843
PUFFENBARGER RICHARD A1/3 ETAL % HAROL			43 RED CLOVER LN	MOUNT SOLON	VA	22843
RALSTON CARTER J OR JANIS A	1041 NORTH RIVER RD		1041 NORTH RIVER RD	MOUNT SOLON	VA	22843
RALSTON ROBERT W	125 EUBANK RD		125 EUBANK RD	MOUNT SOLON	VA	22843
RAMSEY AARON L	358 LICK RUN RD		358 LICK RUN RD	MOUNT SOLON	VA	22843
RAWLEY GUY N OR ALMA ELIZABETH (LIFE)	232 NARROW BACK RD		232 NARROW BACK RD	MOUNT SOLON	VA	22843
RAWLEY DANIEL S	1154 GEORGE WALTONS RD		478 GEORGE WALTONS RD	MOUNT SOLON	VA	22843
REEVES ERNEST M FAM LTD LIABILITY CO(FREEMASON RUN RD		398 MOSSY CREEK RD	MOUNT SOLON	VA	22843
REID EVERETT BELL & BETTY JEAN	95 CODY LN		8538 CULLEY DR	MECHANICSVILLE	VA	23111
RHODES LEROY F & REBA S CO-TRUSTEES O	MILLERS RD		148 MILLERS RD	BRIDGEWATER	VA	22812
RHODES MICHAEL A OR ANGELA C	959 NORTH RIVER RD		959 NORTH RIVER RD	MOUNT SOLON	VA	22843
RINACA EDWARD H OR JOANN M	263 EMMANUEL CHURCH RD		9430 WATERFOWL FLYWAY	CHESTERFIELD	VA	23838
RODEFFER PATRICIA L	75 GRINDSTONE RD		75 GRINDSTONE RD	BRIDGEWATER	VA	22812
ROHRER LOGAN W OR RACHAEL E	1774 NORTH RIVER RD		1774 NORTH RIVER RD	MOUNT SOLON	VA	22843
RUSMISEL DALE K & KATHLEEN D TRUSTEE			593 TOWERS RD	MOUNT SOLON	VA	22843
RUTHERFORD CHARLES W OR SYLVIA H	68 HEARTHSTONE LN		68 HEARTHSTONE LN	MOUNT SOLON	VA	22843
SANGERSVILLE-TOWERS RURITAN CLUB INC %	38 EMMANUEL CHURCH RD		498 SOUTH MASON ST	HARRISONBURG	VA	22801
SCOTT CHRISTOPHER L	398 STOKESVILLE RD		P O BOX 1423	HARRISONBURG	VA	22803
SENGER BRUCE D OR BARBARA D			615 FREEMASON RUN RD	MOUNT SOLON	VA	22843
SHAFER ROBERT W JR OR ELIZABETH H	944 GEORGE WALTONS RD		944 GEORGE WALTONS RD	MOUNT SOLON	VA	22843
SHANK DAVID M OR HEATHER S %FEDERAL N	13 MILLERS RD		14523 SW MILLIKAN WAY#200	BEAVERTON	OR	97005
SHANK WAYNE EDWARD OR BERTHA J	79 DORCAS RD		79 DORCAS RD	MOUNT SOLON	VA	22843
SHANK JEFFREY W OR MARILYNN F	101 DORCAS RD		101 DORCAS RD	MOUNT SOLON	VA	22843
SHANK JOHN W	73 DORCAS RD		73 DORCAS RD	MOUNT SOLON	VA	22843
SHANK JAMES C OR HELEN %DONNIE ERVINE	109 STOKESVILLE RD		622 STRIBLING SPRINGS RD	MOUNT SOLON	VA	22843

SHARP PAUL H JR	56 GRINDSTONE RD	56 GRINDSTONE RD	BRIDGEWATER	VA	22812
SHEEP CREEK POULTRYLLC & JIMCO LLC	335 EMMANUEL CHURCH RD	3962 SCENIC HWY	MOUNT SOLON	VA	22843
SHEFFER HAROLD E OR JOYCE P	TILMAN RD	4747 OTTOBINE RD	DAYTON	VA	22821 540-879-9787
SHEFFER THOMAS R OR PAMELA R	990 FREEMASON RUN RD	990 FREEMASON RUN RD	MOUNT SOLON	VA	22843
SHEFFER HARVEY LEE	155 LICK RUN RD	155 LICK RUN RD	MOUNT SOLON	VA	22843
SHEFFER ERNEST WAYNE OR LINDA H	1262 NORTH RIVER RD	1262 NORTH RIVER RD	MOUNT SOLON	VA	22843
SHEFFER CARL LEROY ETAL	139 LICK RUN RD	150 NATURAL CHIMNEY'S RD	MOUNT SOLON	VA	22843
SHEFFER JIMMY J OR CAROLYN A (LIFE)	906 NORTH RIVER RD	920 NORTH RIVER RD	MOUNT SOLON	VA	22843
SHIFFLETT CHARLES RANDALL	1755 NORTH RIVER RD	1755 NORTH RIVER RD	MOUNT SOLON	VA	22843
SHOEMAKER TINA ANN	1083 NORTH RIVER RD	1083 NORTH RIVER RD	MOUNT SOLON	VA	22843
SHOWALTER BLAINE M	2124 NORTH RIVER RD	2088 NORTH RIVER RD	MOUNT SOLON	VA	22843
SHOWALTER WESLEY DALE	FREEMASON RUN RD	6368 PINE GROVE DR	BRIDGEWATER	VA	22812
SHOWALTER MARY ELLEN	355 LICK RUN RD	3241 COAKLEY TOWN RD	DAYTON	VA	22821
SHOWALTER WILLIAM H OR MARY ELLEN	193 LICK RUN RD	3241 COAKLEY TOWN RD	DAYTON	VA	22821
SHOWALTER ERIC L	71 SHULLS LN	71 SHULLS LN	MOUNT SOLON	VA	22843
SHULL GAYLE L OR GAIL E	259 OLD C&W RAILWAY RD	2458 AIRPORT RD	BRIDGEWATER	VA	22812
SHULL REBECCA A (LIFE)	48 SHULLS LN	48 SHULLS LN	MOUNT SOLON	VA	22843
SHULL WILLIAM B OR STACY	50 SHULLS LN	105 TRINITY POINT RD	SWOOPE	VA	24479
SHULL DONNIE F OR ELSIE W	1622 NORTH RIVER RD	1622 NORTH RIVER RD	MOUNT SOLON	VA	22843
SHULL MICHAEL B	1050 NORTH RIVER RD	1050 NORTH RIVER RD	MOUNT SOLON	VA	22843
SHUMEYKO SERGEY I OR LINA M	90 GRINDSTONE RD	90 GRINDSTONE RD	BRIDGEWATER	VA	22812
SIEGEL ROBIN	1096 GEORGE WALTONS RD	1096 GEORGE WALTONS RD	MOUNT SOLON	VA	22843
SIEVER MARILYN M	658 FREEMASON RUN RD	658 FREEMASON RUN RD	MOUNT SOLON	VA	22843
SIMMERS MELVON W JR OR LINDA R		57 GRINDSTONE RD	BRIDGEWATER	VA	22812
SIMMERS JOSHUA L OR MARSHA A	285 OLD C&W RAILWAY RD	285 OLD C&W RAILWAY RD	MOUNT SOLON	VA	22843
SIMMONS MARTIN D	586 TOWERS RD	691 TOWERS RD	MOUNT SOLON	VA	22843
SIMMONS DAVID LEE & PATRICIA F		586 TOWERS RD	MOUNT SOLON	VA	22843
SIMMONS KATHLEEN L		691 TOWERS RD	MOUNT SOLON	VA	22843
SIMMONS MARTIN D		691 TOWERS RD	MOUNT SOLON	VA	22843
SIMMONS KATHLEEN L	691 TOWERS RD	691 TOWERS RD	MOUNT SOLON	VA	22843
SIMMONS NANCY E	17 GRINDSTONE RD	17 GRINDSTONE RD	BRIDGEWATER	VA	22812
SIMMONS DEBORAH J (LIFE)	236 NORTH RIVER RD	236 N RIVER RD	MOUNT SOLON	VA	22843 540-350-2246
SIMMONS DANIEL 1/3 ETAL % L CATHRYN S		236 NORTH RIVER RD	MOUNT SOLON	VA	22843 540-350-2246

SIMMONS LEAFY	28 KELLEY LN	28 KELLEY LN	MOUNT SOLON	VA		22843	
SLEDGE ELMER R OR KATHRN E	1343 GEORGE WALTONS RD	1343 GEORGE WALTONS RD	MOUNT SOLON	VA		22843	350-2531/292-4388
SLOUGH JIMMY H OR RHETA H	1802 NORTH RIVER RD	1802 NORTH RIVER RD	MOUNT SOLON	VA		22843	
SMITH MASON F JR ETAL %MARY BURGER	212 TILMAN RD	630 WOOD ST	HERNDON	VA		20170	
SMITH DJIANNE L	1611 NORTH RIVER RD	1611 NORTH RIVER RD	MOUNT SOLON	VA		22843	
SMITH RONALD L OR RUTH E	1222 NORTH RIVER RD	1222 NORTH RIVER RD	MOUNT SOLON	VA		22843	
SMITH BETTY J TRUST	993 NORTH RIVER RD	993 NORTH RIVER RD	MOUNT SOLON	VA		22843	540-350-2697
SMITH DALE K	NORTH RIVER RD	987 NORTH RIVER RD	MOUNT SOLON	VA		22843	
SMITH CORY P	903 NORTH RIVER RD	903 NORTH RIVER RD	MOUNT SOLON	VA		22843	540-350-2594
ST PAULS LUTHERAN CHURCH	1338 GEORGE WALTONS RD	P O BOX 21	MOUNT SOLON	VA		22843	
STAUBUS DONALD RAY OR DONNA SUE	92 OLD CLARK LN	89 BARGER LN	MOUNT SOLON	VA		22843	
STOKESVILLE OWNERS GROUP LLC	468 STOKESVILLE RD	222 CAMPBELL ST	HARRISONBURG	VA		22801	
STOKESVILLE COMMUNITY CHURCH OF CHRIST	39 NORTH RIVER RD	39 NORTH RIVER RD	MOUNT SOLON	VA		22843	
STOKESVILLE CHURCH		GEN DEL	MOUNT SOLON	VA		22843	
STOKESVILLE OWNERS GROUP LLC		222 CAMPBELL ST	HARRISONBURG	VA		22801	
STOUTAMYER THOMAS T & DOROTHY H	38 CHESAPEAKE LN	203 OLD C&W RAILWAY RD	MOUNT SOLON	VA		22843	
STOUTAMYER DOROTHY JANE HUFFER OR THOMA		203 OLD C&W RAILWAY RD	MOUNT SOLON	VA		22843	
STOUTAMYER DENNIS J	1048 NORTH RIVER RD	1048 NORTH RIVER RD	MOUNT SOLON	VA		22843	
STROTHER HARVEY % WOODROW JOHNSON JR		341 DIXIE AVE	HARRISONBURG	VA		22801	
STROTHER FRANKLIN E OR DONNA F	1045 NORTH RIVER RD	1045 NORTH RIVER RD	MOUNT SOLON	VA		22843	
SULLIVAN GEORGE (LIFE) %WALLACE T SULL		17 BUCKLAND DR	MOUNT SOLON	VA		22843	
SUTHERLY EDWARD L JR AND KRISTINA D	89 DORCAS RD	89 DORCAS RD	MOUNT SOLON	VA		22843	
TALBOTT ROBERT D	130 GRINDSTONE RD	130 GRINDSTONE RD	BRIDGEWATER	VA		22812	
TAPEAKA HOLSTNS #1LLC1/2& TAPEAKA HOLST	425 FREEMASON RUN RD	75 FREEMASON RUN RD	MOUNT SOLON	VA		22843	540-350-2077
TERRY JEFFREY A	1250 NORTH RIVER RD	1250 NORTH RIVER RD	MOUNT SOLON	VA		22843	
TETER CLARK W		174 CODY LN	MOUNT SOLON	VA		22843	540-350-2020
THACKER RICHARD L OR CAROLYN E	116 GRINDSTONE RD	116 GRINDSTONE RD	BRIDGEWATER	VA		22812	
THOMPSON TERRY A JR OR ANGELA S	1129 GEORGE WALTONS RD	1129 GEORGE WALTONS RD	MOUNT SOLON	VA		22843	
THOMPSON MICHAEL E OR SUSAN R	1255 GEORGE WALTONS RD	1255 GEORGE WALTONS RD	MOUNT SOLON	VA		22843	540-280-0319
TIERNEY BRIAN D OR KARLA A	76 GRINDSTONE RD	76 GRINDSTONE RD	BRIDGEWATER	VA		22812	
TODD WILMER F JR		2508 LAMIRAGE CT	VIRGINIA BEACH	VA		23456	757-426-9603
TODD MICHAEL DAVID		4020 COOK RD	MEDINA	OH		44256	
TODD WILLIAM LENARD OR CHRISTINE CASSID	1627 NORTH RIVER RD	1627 NORTH RIVER RD	MOUNT SOLON	VA	9601	22843	

TOOMBS LUCY RTRS OF			1686 NORTH RIVER RD	MOUNT SOLON	VA		22843
TROBAUGH FRANCES A TR RHODES LINDA	49 CODY LN		1285 SHANK DR APT 312	HARRISONBURG	VA		22802
TRUPE ALICE L	1414 NORTH RIVER RD		1414 NORTH RIVER RD	MOUNT SOLON	VA		22843 540-810-1337
TUTOR BRENDA P	1786 NORTH RIVER RD		1786 NORTH RIVER RD	MOUNT SOLON	VA		22843
UNITED STATES OF AMERICA			GEN DEL	VERONA	VA		24482
WEEKLEY WILLIAM A JR OR SUSAN G	149 CHESAPEAKE LN		149 CHESAPEAKE LN	MOUNT SOLON	VA		22843 540-350-2874
WERNER JAMES F			3502 VALLEY VIEW AVE NW	ROANOKE	VA		24012 540-362-2763
WHETZEL IRVIN W OR KAREN L	198 NORTH RIVER RD		15 E HAMPTON ST	STAUNTON	VA		24401
WHETZEL JAMES P OR CHANG SUN	318 NORTH RIVER RD		318 NORTH RIVER RD	MOUNT SOLON	VA		22843 540-350-4131
WHISTLEMAN OLLIE W % GAYLE SHULL			2458 AIRPORT RD	BRIDGEWATER	VA		22812
WICHAEL H FRANK			269 GRINDSTONE RD	BRIDGEWATER	VA		22812
WICHAEL JAMES P	2309 NORTH RIVER RD		2309 NORTH RIVER RD	MOUNT SOLON	VA		22843
WICHAEL LESTER CRAIG	41 GRINDSTONE RD		10 COLLEGE WOODS DR	BRIDGEWATER	VA		22812
WILL JOANIE LYNETTE	1748 NORTH RIVER RD		1748 NORTH RIVER RD	MOUNT SOLON	VA		22843
WINE G ROSCOE OR VIRGINIA A	1119 NORTH RIVER RD		6652 MOSSY CREEK RD	BRIDGEWATER	VA		22812
WOOD JACQUELINE A 1/2 & OLIN C ARMSTR			4 HIDDEN LN	STAUNTON	VA	9207	24401
WRIGHT THOMAS ANDREW OR GINGER LEA HOWD	58 GRINDSTONE RD		58 GRINDSTONE RD	BRIDGEWATER	VA		22812
YANKEY ALLEN G & NORMA H (LIFE)	291 TIMBER RIDGE RD		291 TIMBER RIDGE RD	MOUNT SOLON	VA		22843
ZIMMERMAN SHERMAN W			2205 NORTH RIVER RD	MOUNT SOLON	VA		22843
ZIMMERMAN IRVIN D & PEGGY R	1292 NATURAL CHIMNEYS RD		1292 NATURAL CHIMNEYS RD	MOUNT SOLON	VA		22843 540-350-2608
ZIMMERMAN B J OR ERMA G			330 MOSSY CREEK RD	MOUNT SOLON	VA		22843