

Augusta County

COURTHOUSE PROJECT UPDATE

Board of Supervisors Staff Briefing

May 20, 2019

Agenda

- **Projects**
- **Preliminary Schedule**
- **Beverley Manor Elementary School**
- **New Building**
- **Floor plan development**
- **Elevation development**
- **Your questions**

Staunton, Va., Augusta County Court House

Projects

- **Renovation of swing space - Beverley Manor Elementary School**
- **Demolish of existing District Courts Building / construction of New Courts Building**
- **Renovation of 1901 Circuit Courthouse**

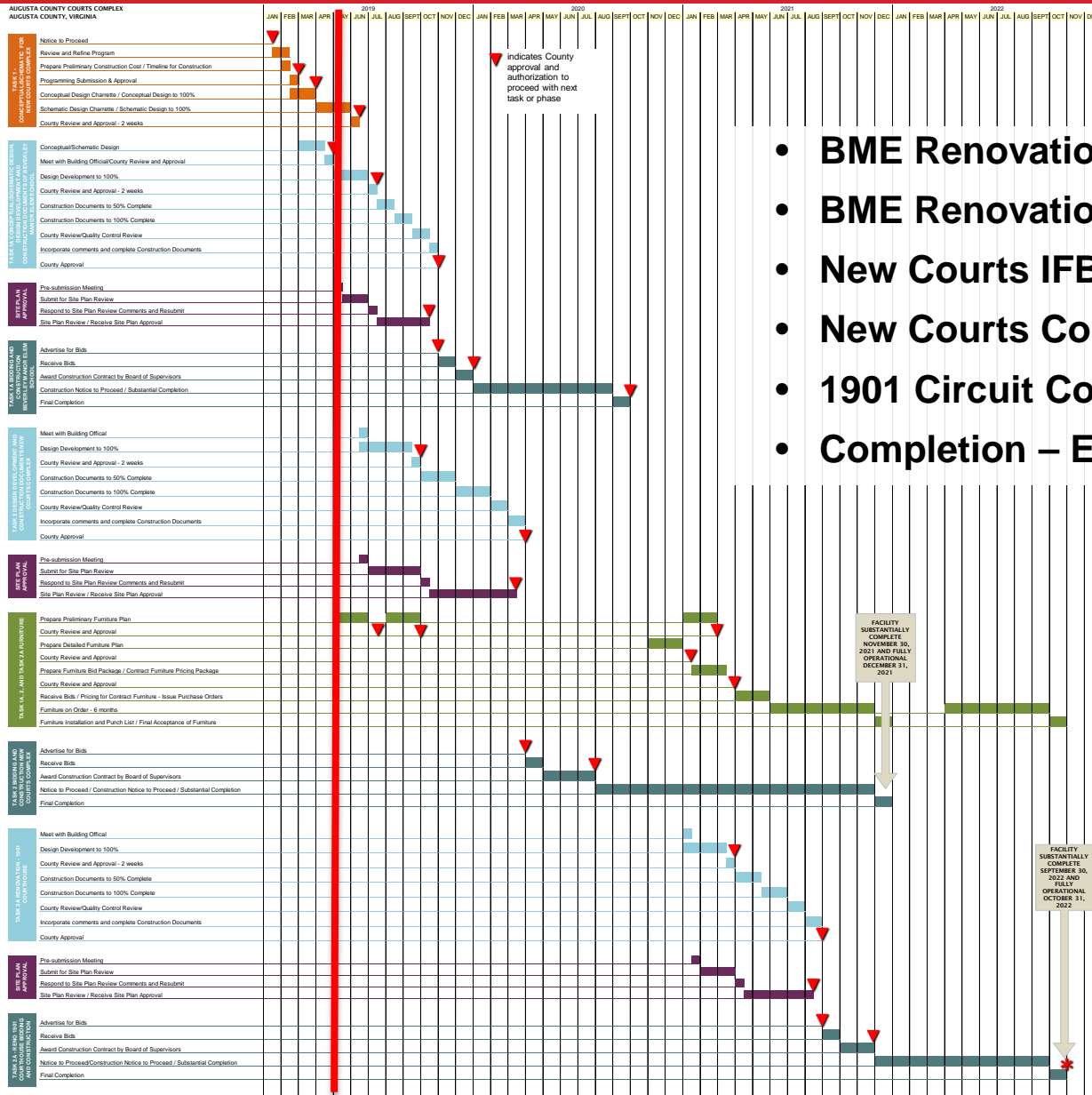


1 EXIST FRONT ELEVATION
SCALE 1/8" = 1'-0"



2 EXIST REAR ELEVATION
SCALE 1/8" = 1'-0"

Preliminary Schedule



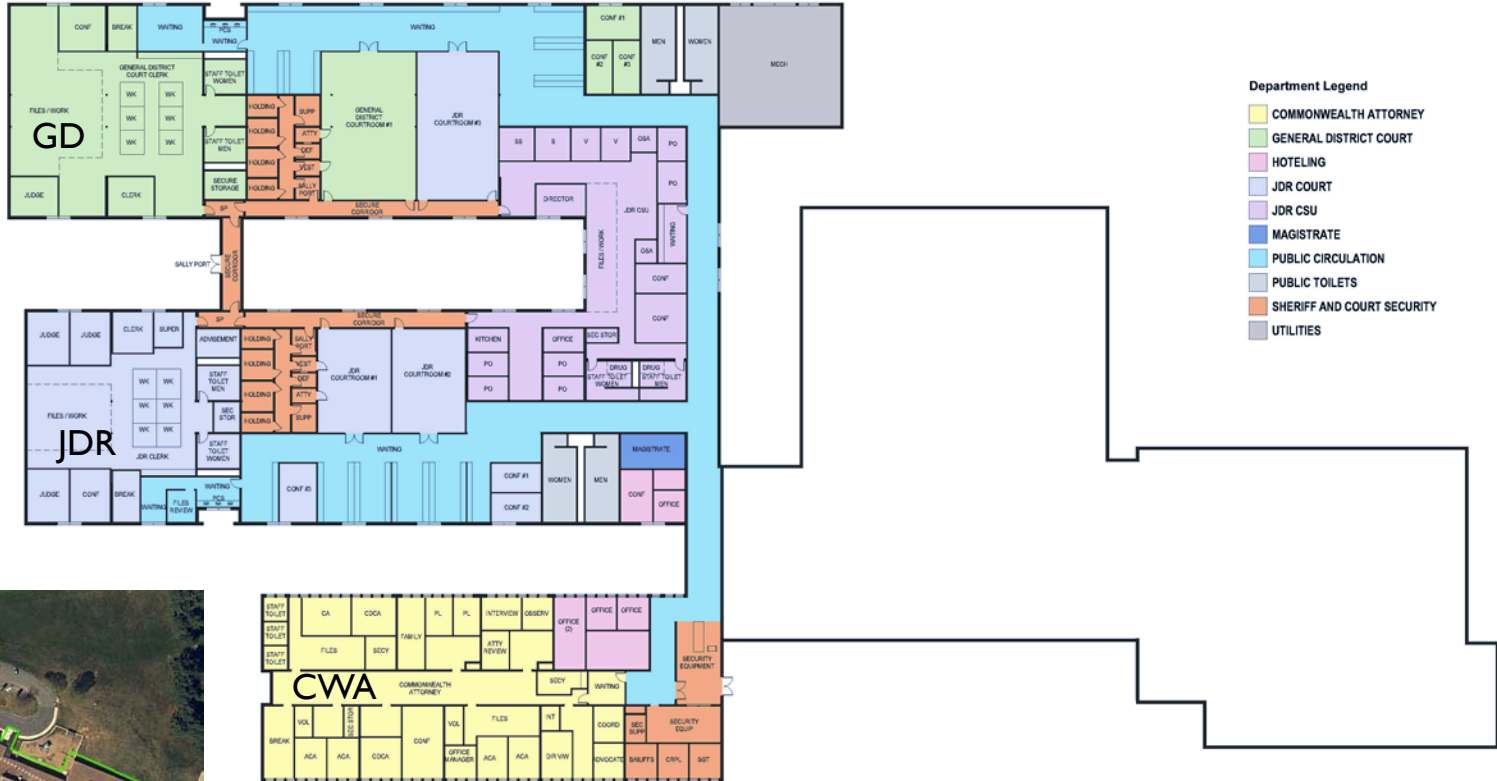
- **BME Renovation IFB – Late fall 2019**
- **BME Renovation – Early 2020**
- **New Courts IFB – Spring 2020**
- **New Courts Construction – Fall 2021**
- **1901 Circuit Courthouse Renovation – Fall 2021**
- **Completion – End of 2022**

Beverley Manor Elementary School



- Lease
- Conceptual & schematic design
- Site plan & construction plans
- PUO – Public Use Overlay
- Other considerations

Beverley Manor Elementary School



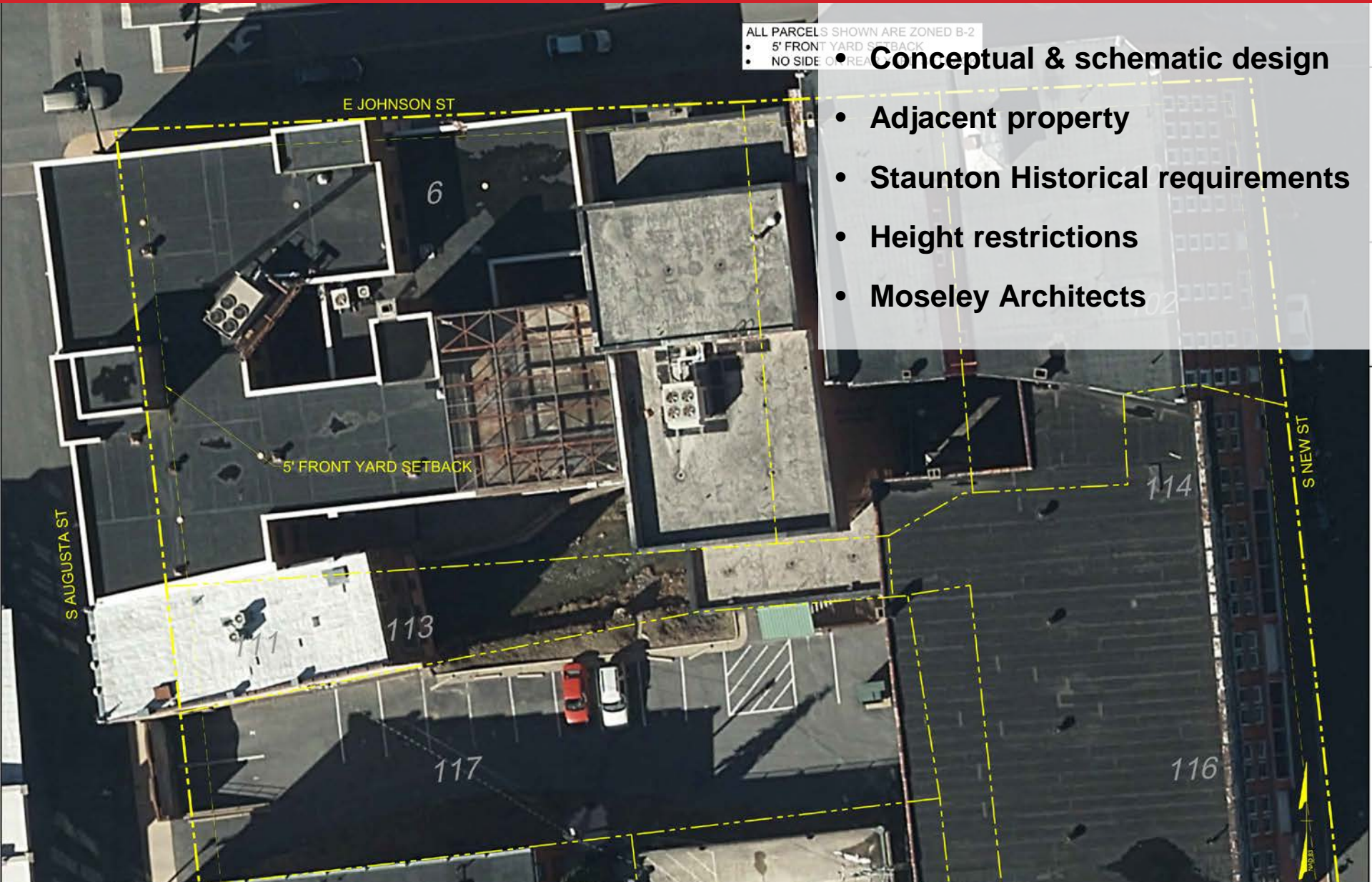
- Department Legend**
- COMMONWEALTH ATTORNEY
 - GENERAL DISTRICT COURT
 - HOTELING
 - JDR COURT
 - JDR CSU
 - MAGISTRATE
 - PUBLIC CIRCULATION
 - PUBLIC TOILETS
 - SHERIFF AND COURT SECURITY
 - UTILITIES



OPTION 5A

FIRST FLOOR PLAN

New Building



ALL PARCELS SHOWN ARE ZONED B-2

- 5' FRONT YARD SETBACK
- NO SIDE OR REAR SETBACKS

• Conceptual & schematic design

- Adjacent property
- Staunton Historical requirements
- Height restrictions
- Moseley Architects

E JOHNSON ST

6

5' FRONT YARD SETBACK

S AUGUSTA ST

113

117

114

S NEW ST

116

0023

Floor Plan Development

AUGUSTA COUNTY NEW COURTS BUILDING - SPACE NEEDS

SUMMARY

	CURRENT SPACE	BEVERLEY MANOR		NEW COURTS COMPLEX 1901 CIRCUIT COURTHOUSE	
	NET SQ FT (NSF)	PERS	NSF	PERS	NSF
CIRCUIT COURT	5,600			7	15,534
CIRCUIT COURT CLERK	11,310		938	14	13,514
COMM ATTORNEY/ VICTIM WITNESS	7,445	17	6,110	22	8,373
COURTS - SHARED			384		504
GENERAL DISTRICT COURT	4,090	1	5,459	2	11,017
GENERAL DISTRICT COURT CLERK	2,890	7	2,665	8	3,418
J&DR COURT	4,012	3	9,654	3	12,408
J&DR COURT CLERK	4,310	8	3,407	17	4,449
J&DR COURT SERVICES UNIT	2,775	13	3,703	20	4,867
MAGISTRATE	335	1	297	1	297
SHERIFF - COURT SECURITY	1,410	10	1,472	13	3,625
TOTAL PERSONNEL / NSF	44,177	60	34,088	107	78,004
CURRENT / REQUIRED GROSS SQ FT					120,007

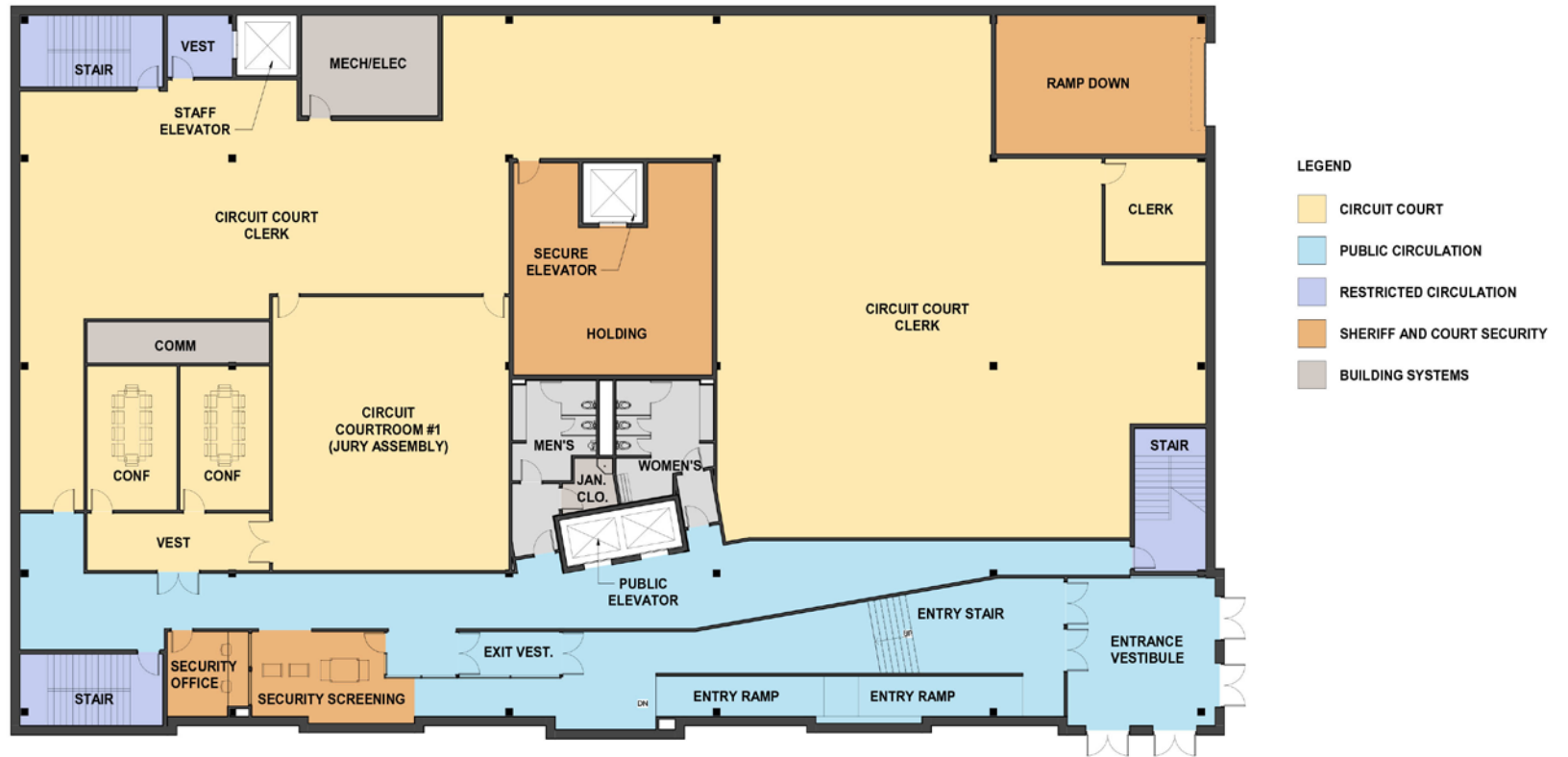
Required gross square footage calculation above is determined using an efficiency of 65%.



- LEGEND
- RESTRICTED CIRCULATION
 - SHERIFF AND COURT SECURITY

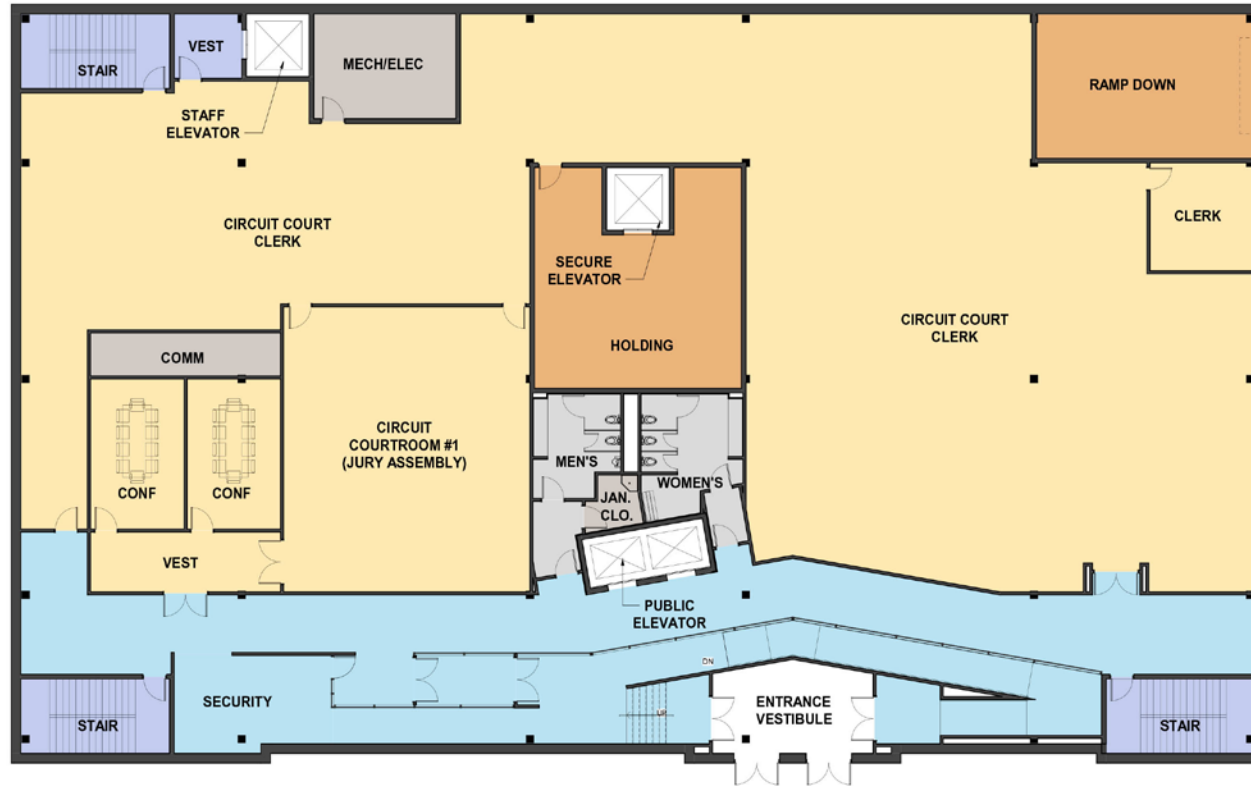
Lower level





First Floor – Option 1

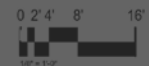




LEGEND

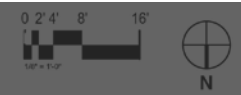
- CIRCUIT COURT
- PUBLIC CIRCULATION
- RESTRICTED CIRCULATION
- SHERIFF AND COURT SECURITY
- BUILDING SYSTEMS

First Floor – Option 2





Second Floor – Option 1





- LEGEND**
- GENERAL DISTRICT COURT
 - PUBLIC CIRCULATION
 - RESTRICTED CIRCULATION
 - SHERIFF AND COURT SECURITY
 - BUILDING SYSTEMS

Second Floor – Option 2





- LEGEND**
- CIRCUIT COURT
 - GENERAL DISTRICT COURT
 - JDR COURT
 - PUBLIC CIRCULATION
 - RESTRICTED CIRCULATION
 - SHERIFF AND COURT SECURITY
 - BUILDING SYSTEMS



Third Floor



- LEGEND**
- JDR COURT
 - PUBLIC CIRCULATION
 - RESTRICTED CIRCULATION
 - SHERIFF AND COURT SECURITY
 - BUILDING SYSTEMS



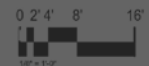
Fourth Floor



LEGEND

- CIRCUIT COURT
- PUBLIC CIRCULATION
- RESTRICTED CIRCULATION
- SHERIFF AND COURT SECURITY
- BUILDING SYSTEMS

Fifth Floor



Elevation development





Elevation Option A



Elevation Option A



Elevation Option B



Elevation Option B



Elevation Option C



Elevation Option C



Elevation Option C1



Elevation Option C1

Next Steps

- Schematic Design meetings with user groups
- Resolution of New Building height
- Further development of elevations
- Submission of Schematic Design for Beverley Manor / New Courts Building



1 EXIST FRONT ELEVATION
SCALE 1/8" = 1'-0"



2 EXIST REAR ELEVATION
SCALE 1/8" = 1'-0"

MOSELEYARCHITECTS

Designing solutions. Building trust. Enriching lives.