





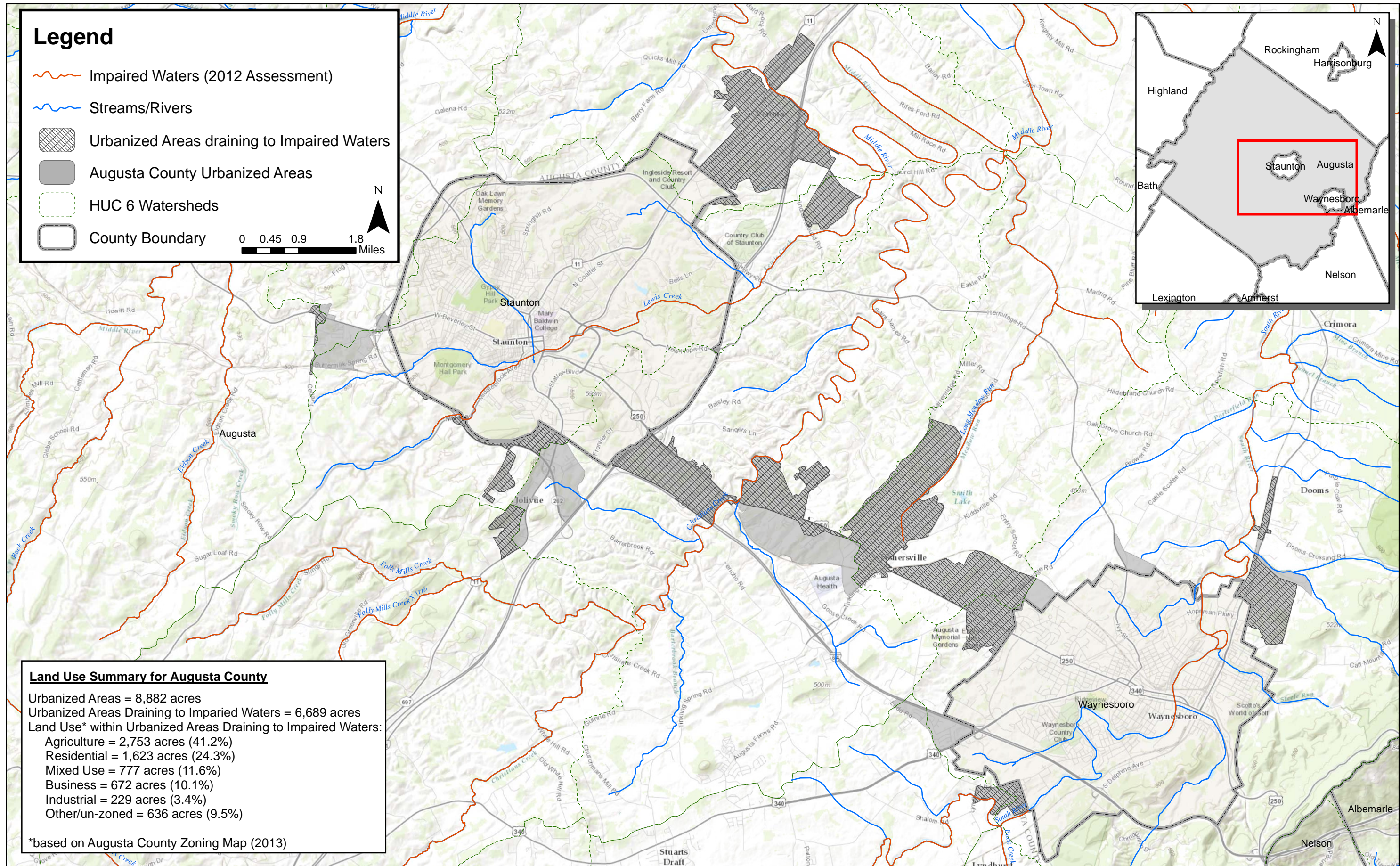
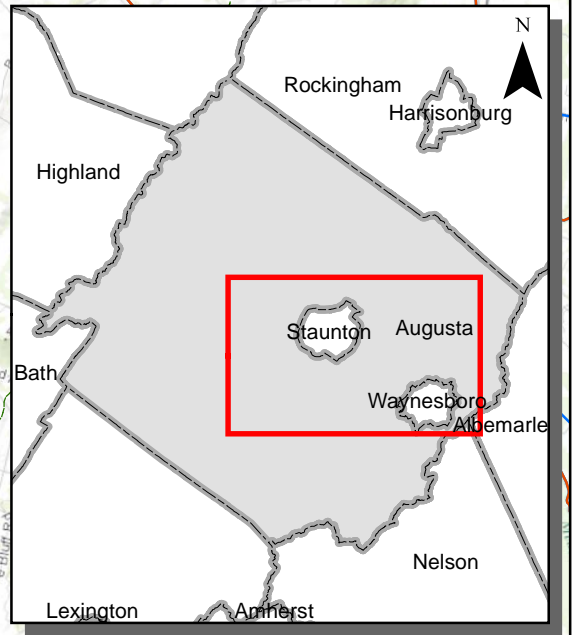
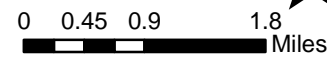


# Legend

-  Impaired Waters (2012 Assessment)
-  Streams/Rivers
-  Urbanized Areas draining to Impaired Waters
-  Augusta County Urbanized Areas
-  HUC 6 Watersheds
-  County Boundary



## Land Use Summary for Augusta County

Urbanized Areas = 8,882 acres  
 Urbanized Areas Draining to Impaired Waters = 6,689 acres  
 Land Use\* within Urbanized Areas Draining to Impaired Waters:

- Agriculture = 2,753 acres (41.2%)
- Residential = 1,623 acres (24.3%)
- Mixed Use = 777 acres (11.6%)
- Business = 672 acres (10.1%)
- Industrial = 229 acres (3.4%)
- Other/un-zoned = 636 acres (9.5%)

\*based on Augusta County Zoning Map (2013)